



BROOKLANA ANGUS BULL SALE

**20
SIRES
SALE**

Friday 6th September 2024, 12 noon
at Brooklana Angus Stud, interfaced with Auctions Plus sale 124235



VIDEO LINK:



LOT 3 - BROOKLANA ROCKET MAN T84

ROCKET MAN SON, DAM IS AMQQ3, MM PRUE M4 DAUGHTER



MILLAH MURRAH ROCKET MAN R38 7 SONS SELLING

Sons headlining 2024 bull sales, joined here to Prue, Flower, Abigail, Dream, Emperor, Reality cow families.



BROOKLANA PRUE Q3

Phenotype, temperament, breeding, she has it!



MILLAH MURRAH PARATROOPER P15

Record setting progeny, at legendary status



MILLAH MURRAH PRUE M4 6 GRANDSONS SELLING

Described by many as probably the best Angus cow in Australasia, her outstanding progeny are well represented in our 2024 sale

BULL SALE INSPECTIONS BY APPOINTMENT

A bull and heifer calf, born June 2024, by Rocket Man R38 out of Prue M4, will be on display for viewing on sale day.



Our successful 2023 bull sale featured the combining of our Millah Murrah Prue M4, with Millah Murrah Paratrooper P15.

In 2024, we have been able to again feature Prue M4, this year combining the offering with our Millah Murrah Rocket Man R38, which we secured at the World record breaking 2021, Millah Murrah Bull Sale, Rocket Man topping sale results.

Rocket Man has produced 36 sons, dominating the 2024 Millah Murrah bull sake, testimony to his value as being currently, the Angus sire most likely to benefit producers.

Brooklana Rocket Man sons on offer at our 2024 sale, are joined by an impressive select number of opportunities, Prue grandsons dominating, plus other industry favourites such as Paratrooper and Baldrige Command.

Our bulls are very much “cow ready”, they are mobile, trim, fit and ready.

Thanks so much to those supporters of our stud, special mention to those who help us throughout the year, Rod Parker, my right and left hand man, my phenotypic advisor, Tim Bayliss Ray White Dorrigo and everyone else who plays a part.

Rodger Pryce

Lot 1 MILLAH MURRAH UNIVERSE U137^{PV} NMM23U137

DOB: 14/02/2023 Registration Status: HBR Mating Type: AI Genetic Status: AMFU,CAFU,DDFU,NHFU

EF COMMANDO 1366^{PV}
 MILLAH MURRAH PARATROOPER P15^{PV}
 MILLAH MURRAH ELA M9^{PV}
Sire: NMMR38 MILLAH MURRAH ROCKET MAN R38^{PV}
 LD CAPITALIST 316^{PV}
 MILLAH MURRAH ABIGAIL P57^{PV}
 MILLAH MURRAH ABIGAIL H232^{PV}

ASCOT HALLMARK H147^{PV}
 MILLAH MURRAH NUGGET N266^{PV}
 MILLAH MURRAH HONEY H159^{SV}
Dam: NMMR128 MILLAH MURRAH ABIGAIL R128^{PV}
 MILLAH MURRAH RIGHT TIME F226^{PV}
 MILLAH MURRAH ABIGAIL N150^{PV}
 MILLAH MURRAH ABIGAIL J164^{SV}

August 2024 TransTasman Angus Cattle Evaluation

TACE	CE Dir	CE Dtrs	GL	BW	200	400	600	MCW	Milk	SS	DC
EBV	+0.9	-1.0	+0.5	+6.6	+54	+98	+119	+101	+17	+3.6	-5.2
ACC	64%	54%	83%	82%	83%	81%	81%	78%	73%	80%	40%
Perc	63	84	97	93	33	32	49	51	53	10	36

TACE	CWT	EMA	Rib	Rump	RBV	IMF	NFI-F	Doc	Claw	Angle	Leg
EBV	+69	+5.0	-2.4	-2.4	+0.7	+2.2	-0.02	+11	+0.66	+0.72	+0.86
ACC	69%	70%	69%	70%	61%	73%	60%	78%	67%	67%	65%
Perc	44	66	92	82	35	49	25	85	16	6	9

Selection Indexes

\$A	\$A-L
\$205	\$347
48	52

Traits Observed: GL, Genomics

Notes: Millah Murrah prefix, combining Millah Murrah Rocket sonMan R38, with Millah Murrah Abigail R128 who offers Te Mania Emperor, BT Right Time24J, in her pedigree. Purchased as a cow/calf combination at the 2023 Millah Murrah Stud Angus Sale. Here is an opportunity to secure an 18mth,

Purchaser: \$

Lot 2 BROOKLANA PARATROOPER T81^{PV} AMQ22T81

DOB: 14/11/2022 Registration Status: APR Mating Type: Natural Genetic Status: AM3%,CA3%,DD9%,NH3%

EF COMMANDO 1366^{PV}
 MILLAH MURRAH PARATROOPER P15^{PV}
 MILLAH MURRAH ELA M9^{PV}
Sire: AMQR23 BROOKLANA PARATROOPER R23^{SV}
 V A R GENERATION 2100^{PV}
 BROOKLANA DREAM N60 #
 BROOKLANA DREAM H28 #

UNKNOWN
Dam: AMQP78 BROOKLANA LD PEBBLES P78 #
 FARFIELD TM MODEST 773 #
 BROOKLANA PEBBLES J37 #
 MEDLYN PEBBLES F109 #

August 2024 TransTasman Angus Cattle Evaluation

TACE	CE Dir	CE Dtrs	GL	BW	200	400	600	MCW	Milk	SS	DC
EBV	-2.4	-0.8	-2.0	+3.5	+39	+75	+82	+40	+16	+1.8	-2.3
ACC	63%	52%	81%	81%	82%	79%	80%	76%	72%	77%	37%
Perc	83	83	84	38	92	91	98	99	56	62	91

TACE	CWT	EMA	Rib	Rump	RBV	IMF	NFI-F	Doc	Claw	Angle	Leg
EBV	+39	+1.6	+2.5	+2.8	-1.0	+3.4	+0.38	+40	+0.42	+0.86	+0.96
ACC	67%	66%	66%	67%	57%	72%	58%	73%	61%	61%	57%
Perc	98	93	9	9	98	22	68	3	1	24	28

Selection Indexes

\$A	\$A-L
\$151	\$227
91	98

Traits Observed: BWT, 600WT, Genomics

Notes: The sire of T81 is one of our best bred bulls, by Paratrooper out of a VAR Generation x Dream cow being Brooklana Paratrooper R23, top selling sire at our 2022 bull sale. Dam of T81 we have as being sired by Capitalist 316, with DNA pending , so offered as an APR. We have a lot of time for T81,

Purchaser: \$

Lot 3 BROOKLANA ROCKET MAN T84^{PV} AMQ22T84

DOB: 16/11/2022 Registration Status: HBR Mating Type: Natural Genetic Status: AMFU,CAFU,DDFU,NHFU

EF COMMANDO 1366^{PV}
 MILLAH MURRAH PARATROOPER P15^{PV}
 MILLAH MURRAH ELA M9^{PV}
Sire: NMMR38 MILLAH MURRAH ROCKET MAN R38^{PV}
 LD CAPITALIST 316^{PV}
 MILLAH MURRAH ABIGAIL P57^{PV}
 MILLAH MURRAH ABIGAIL H232^{PV}

S CHISUM 6175^{PV}
 S CHISUM 255^{SV}
 S BLOSSOM 0278 #
Dam: AMQQ3 BROOKLANA MM PRUE Q3^{PV}
 COONAMBLE HECTOR H249^{SV}
 MILLAH MURRAH PRUE M4^{SV}
 MILLAH MURRAH PRUE F141^{PV}

August 2024 TransTasman Angus Cattle Evaluation

TACE	CE Dir	CE Dtrs	GL	BW	200	400	600	MCW	Milk	SS	DC
EBV	+5.5	+1.2	-4.6	+4.0	+52	+91	+122	+116	+14	+1.2	-4.2
ACC	66%	56%	83%	83%	84%	82%	82%	78%	74%	81%	42%
Perc	22	69	46	50	42	53	43	29	71	81	60

TACE	CWT	EMA	Rib	Rump	RBV	IMF	NFI-F	Doc	Claw	Angle	Leg
EBV	+75	+6.1	+0.2	+2.4	+0.4	+1.5	+0.07	+6	+0.68	+0.86	+0.88
ACC	70%	71%	70%	71%	62%	74%	61%	78%	67%	67%	63%
Perc	29	53	44	12	53	69	34	94	18	24	11

Selection Indexes

\$A	\$A-L
\$200	\$358
54	42

Traits Observed: BWT, 600WT, Genomics

Notes: For the first time, a Rocket Man R38 son is being offered, out if a Millah Murrah Prue M4 daughter, the result reflects the outcome of the \$470,000 investment which we have made in acquiring Rocket Man R38 and Prue M4. The dam of T84 is Brooklana Prue Q3, daughter of Chisum 255, Q3

Purchaser: \$

Lot 4 **BROOKLANA B COMMAND T68 PV** **AMQ22T68**

DOB: 22/10/2022 Registration Status: HBR Mating Type: Natural Genetic Status: AMFU,CAFU,DD6%,NHFU

EF COMMANDO 1366 PV
BALDRIDGE COMMAND C036 PV
BALDRIDGE BLACKBIRD A030 #
Sire: AMQR85 BROOKLANA B COMMAND R85 SV
BROOKLANA HI TOWER H64 PV
BROOKLANA GYPSY M045 M45 #
MEDLYN GIPSY F120 #

TE MANIA EMPEROR E343 PV
BROOKLANA TM EMPEROR J64 PV
MEDLYN REVLON E17 SV
Dam: AMQR118 BROOKLANA PEBBLES R118 SV
FARFIELD TM MODEST 773 #
BROOKLANA PEBBLES J37 #
MEDLYN PEBBLES F109 #

August 2024 TransTasman Angus Cattle Evaluation

TACE	CE Dir	CE Dtrs	GL	BW	200	400	600	MCW	Milk	SS	DC
EBV	+3.7	+5.0	-5.1	+4.1	+52	+96	+129	+120	+19	+1.2	-4.6
ACC	64%	55%	82%	81%	82%	80%	81%	77%	73%	78%	40%
Perc	38	29	38	52	44	37	28	23	36	81	50

TACE	CWT	EMA	Rib	Rump	RBV	IMF	NFI-F	Doc	Claw	Angle	Leg
EBV	+77	+4.7	+0.9	-1.2	+0.7	+0.0	+0.24	+35	+0.82	+0.90	+1.02
ACC	69%	69%	69%	70%	60%	74%	62%	75%	60%	60%	57%
Perc	25	70	29	65	35	95	53	8	45	33	47

Selection Indexes

\$A	\$A-L
\$180	\$342
73	56

Traits Observed: BWT, 200WT, 600WT, Genomics

Notes: A heifer bull with great growth, at the top end of the group's weight gains as well. Te Mania Emperor on both sides of his pedigree, this is a really handy bull and should receive a lot of attention from those looking for calving ease, growth, phenotype and docility.

Purchaser: \$

Lot 5 **BROOKLANA ROCKET MAN T61 PV** **AMQ22T61**

DOB: 30/09/2022 Registration Status: HBR Mating Type: AI Genetic Status: AMFU,CAFU,DDFU,NHFU

EF COMMANDO 1366 PV
MILLAH MURRAH PARATROOPER P15 PV
MILLAH MURRAH ELA M9 PV
Sire: NMMR38 MILLAH MURRAH ROCKET MAN R38 PV
LD CAPITALIST 316 PV
MILLAH MURRAH ABIGAIL P57 PV
MILLAH MURRAH ABIGAIL H232 PV

EF COMMANDO 1366 PV
BALDRIDGE COMMAND C036 PV
BALDRIDGE BLACKBIRD A030 #
Dam: AMQR104 BROOKLANA QUEEN R104 SV
SYDGEN TRUST 6228 #
BROOKLANA QUEEN M15 #
BROOKLANA QUEEN J72 #

August 2024 TransTasman Angus Cattle Evaluation

TACE	CE Dir	CE Dtrs	GL	BW	200	400	600	MCW	Milk	SS	DC
EBV	+1.9	+4.5	-6.5	+5.9	+66	+117	+162	+157	+12	+2.2	-1.2
ACC	67%	57%	83%	83%	84%	82%	82%	79%	74%	80%	42%
Perc	55	35	20	86	4	4	2	3	86	47	97

TACE	CWT	EMA	Rib	Rump	RBV	IMF	NFI-F	Doc	Claw	Angle	Leg
EBV	+94	+8.1	-1.9	-3.2	+0.8	+1.4	+0.04	+13	+1.04	+0.98	+0.94
ACC	70%	71%	70%	71%	62%	75%	62%	78%	67%	67%	65%
Perc	3	30	87	90	29	72	31	78	85	53	23

Selection Indexes

\$A	\$A-L
\$196	\$377
59	28

Traits Observed: BWT, 200WT, 600WT, Genomics

Notes: This is an eye catcher, certainly took the eye of our assessor, Tim Bayliss who has this bull up there amongst the best. 2 Of the 4 calving ease measurements well above average, growth top 4% and better, carcase weight ebv top 3%. The stars are in his pedigree. Ai usually the way.

Purchaser: \$

Lot 6

DOB: Registration Status: Mating Type: Genetic Status:

Lot 7 **BROOKLANA COMMANDO T255 #** **AMQ22T255**

DOB: 24/08/2022 Registration Status: HBR Mating Type: Natural Genetic Status: AMFU,CAFU,DD13%,NHFU

EF COMPLEMENT 8088 PV
EF COMMANDO 1366 PV
RIVERBEND YOUNG LUCY W1470 #
Sire: AMQQ14 BROOKLANA COMMANDO Q14 SV
MILLAH MURRAH DIGBY D108 PV
MILLAH MURRAH FLOWER G57 PV
MILLAH MURRAH FLOWER E63 PV

PATHFINDER GENESIS G357 PV
BROOKLANA GENESIS N9 PV
BROOKLANA FLO-JO L11 PV
Dam: AMQR55 BROOKLANA REGAL R55 PV
BROOKLANA M REALITY K57 SV
BROOKLANA REGAL N21 PV
BROOKLANA REGAL J4 SV

August 2024 TransTasman Angus Cattle Evaluation

TACE	CE Dir	CE Dtrs	GL	BW	200	400	600	MCW	Milk	SS	DC
EBV	+5.3	+7.0	-4.3	+3.2	+53	+98	+139	+115	+26	+1.8	-5.8
ACC	58%	49%	70%	71%	72%	70%	70%	68%	63%	67%	38%
Perc	24	12	51	32	38	32	13	29	4	62	24

TACE	CWT	EMA	Rib	Rump	RBV	IMF	NFI-F	Doc	Claw	Angle	Leg
EBV	+84	+9.7	+1.5	+0.6	+0.7	+1.8	+0.51	+4	-	-	-
ACC	62%	62%	62%	63%	54%	67%	55%	65%	-	-	-
Perc	12	17	19	33	35	61	80	96	-	-	-

Selection Indexes

\$A	\$A-L
\$238	\$411
15	9

Traits Observed: BWT, 600WT

Notes: Hard to fault this bull, with an enviable ebv data set. Calving ease heifer bull, outstanding growth, great carcase and fats. Millah Murrah sire line, with the iconic Millah Murrah Flower G57 being the maternal granddam. Dam of T255, Brooklana Regal R55, has Matauri Reality and Pathfinder Genesis

Purchaser: \$

Lot 8 **BROOKLANA EMPEROR T85 SV** **AMQ22T85**

DOB: 16/11/2022 Registration Status: HBR Mating Type: Natural Genetic Status: AMFU,CAFU,DDFU,NHFU

TE MANIA EMPEROR E343 PV
BROOKLANA EMPEROR L29 PV
BROOKLANA DREAM H24 PV
Sire: AMQQ17 BROOKLANA EMPEROR Q17 PV
COONAMBLE HECTOR H249 SV
MILLAH MURRAH PRUE M4 SV
MILLAH MURRAH PRUE F141 PV

BT RIGHT TIME 24J #
BROOKLANA DREAM H29 PV
VERMONT DREAM B251 PV
Dam: AMQM30 BROOKLANA SIXTY M30 #
TE MANIA EMPEROR E343 PV
BROOKLANA SIXTY J70 #
MEDLYN SIXTY E6 #

August 2024 TransTasman Angus Cattle Evaluation

TACE	CE Dir	CE Dtrs	GL	BW	200	400	600	MCW	Milk	SS	DC
EBV	+8.0	+7.9	-3.0	+4.7	+51	+87	+121	+115	+20	+2.4	-6.1
ACC	65%	56%	82%	82%	83%	80%	81%	78%	73%	78%	43%
Perc	7	7	72	66	51	63	46	29	30	39	19

TACE	CWT	EMA	Rib	Rump	RBV	IMF	NFI-F	Doc	Claw	Angle	Leg
EBV	+66	+7.3	-0.2	-1.2	+1.1	+2.1	-0.12	+15	+0.86	+1.16	+0.96
ACC	71%	70%	70%	71%	62%	75%	63%	75%	57%	59%	54%
Perc	56	38	53	65	16	52	17	73	54	88	28

Selection Indexes

\$A	\$A-L
\$221	\$394
29	17

Traits Observed: BWT, 600WT, Genomics

Notes: First of our Emperor Q17 sons, with Emperor and Dream genetics on both sides of the pedigree. Q17 is a calving ease specialist, this son has the data to uphold the tradition. A Millah Murrah Prue M4 grandson, this sire line understandably produces exceptional females. Plenty of growth here, plus

Purchaser: \$

Lot 9 **BROOKLANA PARATROOPER T267 SV** **AMQ22T267**

DOB: 01/10/2022 Registration Status: APR Mating Type: Natural Genetic Status: AMFU,CAFU,DDFU,NHFU

EF COMMANDO 1366 PV
MILLAH MURRAH PARATROOPER P15 PV
MILLAH MURRAH ELA M9 PV
Sire: AMQR23 BROOKLANA PARATROOPER R23 SV
V A R GENERATION 2100 PV
BROOKLANA DREAM N60 #
BROOKLANA DREAM H28 #

FARFIELD TM MODEST 773 #
BROOKLANA F TM MODEST J33 SV
MEDLYN VICTORIA F106 #
Dam: AMQQ185 BROOKLANA Q185 #
BROOKLANA DREAM H29 PV
BROOKLANA FLO-JO L35 #
BROOKLANA FLO-JO H43 PV

August 2024 TransTasman Angus Cattle Evaluation

TACE	CE Dir	CE Dtrs	GL	BW	200	400	600	MCW	Milk	SS	DC
EBV	-3.7	+1.6	-4.1	+5.5	+57	+103	+133	+124	+10	+2.6	-3.8
ACC	60%	52%	71%	73%	73%	71%	72%	69%	64%	68%	40%
Perc	87	66	56	81	21	19	21	18	91	35	71

TACE	CWT	EMA	Rib	Rump	RBV	IMF	NFI-F	Doc	Claw	Angle	Leg
EBV	+71	+4.8	-1.9	-3.2	+0.8	+1.7	-0.12	+30	-	\$179	-
ACC	63%	61%	62%	63%	56%	65%	54%	65%	-	-	-
Perc	38	69	87	90	34	65	17	16	-	73	-

Selection Indexes

\$A	\$A-L
-	-
-	-

Traits Observed: None

Notes: 8KGS shy of the heaviest bull, T267 has so far slipped under the registration radar, warranted as a HBR, should be cleared by sale day. This sire is another Paratrooper genetic blend with Emperor/24J/Dream genetics, a combination which works every time for us.

Purchaser: \$

WITHDRAWN

Lot 10 **BROOKLANA ROCKET MAN T57 PV** **AMQ22T57**

DOB: 30/09/2022 Registration Status: HBR Mating Type: AI Genetic Status: AMFU,CAFU,DDFU,NHFU

EF COMMANDO 1366 PV
MILLAH MURRAH PARATROOPER P15 PV
MILLAH MURRAH ELA M9 PV
Sire: **NMMR38 MILLAH MURRAH ROCKET MAN R38 PV**
LD CAPITALIST 316 PV
MILLAH MURRAH ABIGAIL P57 PV
MILLAH MURRAH ABIGAIL H232 PV

TE MANIA EMPEROR E343 PV
BROOKLANA EMPEROR L29 PV
BROOKLANA DREAM H24 PV
S A V 8180 TRAVELER 004 #
MEDLYN REVLON E17 SV
MEDLYN REVLON A36 #
Dam: **AMQR105 BROOKLANA REVLON R105 PV**

August 2024 TransTasman Angus Cattle Evaluation

TACE	CE Dir	CE Dtrs	GL	BW	200	400	600	MCW	Milk	SS	DC
EBV	+1.5	+0.7	-2.3	+5.8	+54	+94	+118	+120	+13	+3.7	-3.3
ACC	65%	56%	83%	82%	83%	81%	82%	78%	73%	80%	42%
Perc	58	74	81	85	36	43	53	23	79	9	79

TACE	CWT	EMA	Rib	Rump	RBV	IMF	NFI-F	Doc	Claw	Angle	Leg
EBV	+60	+10.7	-1.7	-2.2	+0.9	+3.3	+0.39	-2	-	-	-
ACC	71%	71%	71%	72%	63%	75%	63%	78%	-	-	-
Perc	71	11	84	80	24	24	69	99	-	-	-

Selection Indexes

\$A	\$A-L
\$198	\$350
56	49

Traits Observed: BWT, 600WT, Genomics

Notes: A Rocket Man son, out of our \$15400 heifer sold 2 years ago. His dam is an L29 daughter, L29 we flushed to PrueM4 resulting in 2 outstanding stud sires, Q17 and Q23. This Rocket Man son out of the proven R105 has outstanding carcass EBVs, a worthy herd sire in the making.

Purchaser: \$

Lot 11 **BROOKLANA EMPEROR T114 PV** **AMQ22T114**

DOB: 18/12/2022 Registration Status: HBR Mating Type: Natural Genetic Status: AMFU,CAFU,DDFU,NHFU

TE MANIA EMPEROR E343 PV
BROOKLANA EMPEROR L29 PV
BROOKLANA DREAM H24 PV
Sire: **AMQQ17 BROOKLANA EMPEROR Q17 PV**
COONAMBLE HECTOR H249 SV
MILLAH MURRAH PRUE M4 SV
MILLAH MURRAH PRUE F141 PV

P S POWER PLAY #
SCOTCH CAP #
HOFF BAND O7 OF S C 509 #
Dam: **AMQN203 BROOKLANA PRIDE N203 SV**
ARDROSSAN EQUATOR A241 PV
BROOKLANA PRIDE H65 PV
MEDLYN PRIDE C37 E

August 2024 TransTasman Angus Cattle Evaluation

TACE	CE Dir	CE Dtrs	GL	BW	200	400	600	MCW	Milk	SS	DC
EBV	-12.5	-0.6	-1.0	+8.9	+55	+98	+138	+144	+15	+2.4	-1.3
ACC	65%	57%	82%	82%	83%	81%	81%	78%	74%	79%	45%
Perc	99	82	92	99	30	32	15	6	63	39	97

TACE	CWT	EMA	Rib	Rump	RBV	IMF	NFI-F	Doc	Claw	Angle	Leg
EBV	+77	+10.0	-5.0	-6.4	+2.5	+0.5	-0.14	+14	+0.76	+1.04	+1.18
ACC	71%	70%	70%	71%	61%	75%	64%	75%	60%	60%	59%
Perc	23	15	99	99	1	90	16	75	32	67	89

Selection Indexes

\$A	\$A-L
\$122	\$240
98	97

Traits Observed: BWT, 600WT, Genomics

Notes: Photo at 17mths, will be 21 mths on sale day, will be growthy with great carcass traits. A Millah Murrah Prue M4 grandson so expect T114 to produce easy doing, strongly maternal, outstanding females.

Purchaser: \$

Lot 12 **BROOKLANA ROCKET MAN T82 PV** **AMQ22T82**

DOB: 16/11/2022 Registration Status: APR Mating Type: AI Genetic Status: AM3%,CA3%,DD3%,NH3%

EF COMMANDO 1366 PV
MILLAH MURRAH PARATROOPER P15 PV
MILLAH MURRAH ELA M9 PV
Sire: **NMMR38 MILLAH MURRAH ROCKET MAN R38 PV**
LD CAPITALIST 316 PV
MILLAH MURRAH ABIGAIL P57 PV
MILLAH MURRAH ABIGAIL H232 PV

UNKNOWN
Dam: **AMQP106 BROOKLANA TIFFANY P106 #**
AYRVALE BARTEL E7 PV
BROOKLANA TIFFANY J23 #
MEDLYN TIFFANY F97 #

August 2024 TransTasman Angus Cattle Evaluation

TACE	CE Dir	CE Dtrs	GL	BW	200	400	600	MCW	Milk	SS	DC
EBV	-	-	-	-	-	-	-	-	-	-	-
ACC	-	-	-	-	-	-	-	-	-	-	-
Perc	-	-	-	-	-	-	-	-	-	-	-

TACE	CWT	EMA	Rib	Rump	RBV	IMF	NFI-F	Doc	Claw	Angle	Leg
EBV	-	-	-	-	-	-	-	-	-	-	-
ACC	-	-	-	-	-	-	-	-	-	-	-
Perc	-	-	-	-	-	-	-	-	-	-	-

Selection Indexes

\$A	\$A-L
-	-
-	-

Traits Observed: None

Notes: An APR who, being a Rocket Man son, is typically thick, phenotypically top draw, has Bartel E7 in his pedigree, could be a great buy for the commercial beef breeder, scanned with the highest EMA.

Purchaser: \$

Lot 13 **BROOKLANA FLO JO T100 SV** **AMQ22T100**

DOB: 10/12/2022 Registration Status: HBR Mating Type: Natural Genetic Status: AMFU,CAFU,DDFU,NHFU

TE MANIA EMPEROR E343 PV
BROOKLANA EMPEROR L29 PV
BROOKLANA DREAM H24 PV
Sire: **AMQQ17 BROOKLANA EMPEROR Q17 PV**
COONAMBLE HECTOR H249 SV
MILLAH MURRAH PRUE M4 SV
MILLAH MURRAH PRUE F141 PV

TE MANIA EMPEROR E343 PV
BROOKLANA TM EMPEROR J64 PV
MEDLYN REVLON E17 SV
Dam: **AMQM71 BROOKLANA DATELINE FLO-JO M71 #**
ARDROSSAN APOLLO A334 SV
BROOKLANA FLO-JO G31 #
MEDLYN FLO-JO C46 SV

August 2024 TransTasman Angus Cattle Evaluation

TACE	CE Dir	CE Dtrs	GL	BW	200	400	600	MCW	Milk	SS	DC
EBV	-7.8	-8.5	-2.8	+8.1	+63	+104	+127	+137	+4	+2.5	-5.7
ACC	64%	54%	82%	82%	82%	80%	81%	77%	73%	78%	41%
Perc	96	99	75	99	8	17	32	9	99	36	26

TACE	CWT	EMA	Rib	Rump	RBV	IMF	NFI-F	Doc	Claw	Angle	Leg
EBV	+68	+3.4	-1.6	-0.6	+0.7	-0.5	-0.27	+33	+0.96	+0.96	+0.98
ACC	70%	70%	69%	71%	61%	75%	63%	74%	57%	57%	54%
Perc	48	82	82	54	35	98	9	10	73	47	34

Selection Indexes

\$A	\$A-L
\$161	\$302
86	81

Traits Observed: BWT, 600WT, Genomics

Notes: 21 months at sale day, heaps of growth, as is in the pedigree, Emperor on both sides of his breeding, want a really quiet, great doer, to breed great females as a bonus, Ai look no further.

Purchaser: \$

Lot 14 **BROOKLANA B COMMAND T116 SV** **AMQ22T116**

DOB: 21/12/2022 Registration Status: HBR Mating Type: Natural Genetic Status: AMFU,CAFU,DDFU,NHFU

EF COMMANDO 1366 PV
BALDRIDGE COMMAND C036 PV
BALDRIDGE BLACKBIRD A030 #
Sire: **AMQR85 BROOKLANA B COMMAND R85 SV**
BROOKLANA HI TOWER H64 PV
BROOKLANA GYPSY M045 M45 #
MEDLYN GIPSY F120 #

MATAURI REALITY 839 #
BROOKLANA M REALITY K57 SV
MEDLYN REGAL F39 #
Dam: **AMQN93 BROOKLANA STARLIGHT N93 #**
ARDROSSAN EQUATOR A241 PV
BROOKLANA STARLIGHT J1 #
PIPINPINGAH MOONLIGHT F1 #

August 2024 TransTasman Angus Cattle Evaluation

TACE	CE Dir	CE Dtrs	GL	BW	200	400	600	MCW	Milk	SS	DC
EBV	-0.1	+0.1	-4.0	+4.8	+51	+92	+131	+121	+21	+1.2	-3.6
ACC	62%	53%	81%	80%	81%	79%	80%	76%	71%	76%	39%
Perc	70	78	57	68	48	48	25	22	21	81	74

TACE	CWT	EMA	Rib	Rump	RBV	IMF	NFI-F	Doc	Claw	Angle	Leg
EBV	+85	+8.8	-1.1	-3.7	+1.4	+0.0	-0.04	+13	+0.96	+1.10	+1.22
ACC	68%	67%	67%	68%	58%	72%	59%	73%	64%	64%	60%
Perc	10	23	73	93	8	95	23	81	73	79	93

Selection Indexes

\$A	\$A-L
\$162	\$304
86	80

Traits Observed: BWT, 600WT, Genomics

Notes: Has all the stars in his makeup, including Matauri Reality and Te Mania Emperor. Another 21mth offering, T116 has strong growth EBVs, together with above average EMA, Retail Beef Yield and Carcass Weight, sired by a Baldrige Command son

Purchaser: \$

Lot 15 **BROOKLANA REVOLUTION T76 PV** **AMQ22T76**

DOB: 12/11/2022 Registration Status: HBR Mating Type: Natural Genetic Status: AMFU,CAFU,DDFU,NHFU

EF COMMANDO 1366 PV
MILLAH MURRAH PARATROOPER P15 PV
MILLAH MURRAH ELA M9 PV
Sire: **AMQR33 BROOKLANA REVOLUTION R33 PV**
COONAMBLE HECTOR H249 SV
MILLAH MURRAH PRUE M4 SV
MILLAH MURRAH PRUE F141 PV

K C F BENNETT PERFORMER #
COONAMBLE HECTOR H249 SV
COONAMBLE E9 PV
Dam: **AMQQ18 BROOKLANA MM PRUE Q018 PV**
MILLAH MURRAH EVIDENT H105 SV
MILLAH MURRAH PRUE K79 SV
MILLAH MURRAH PRUE G89 PV

August 2024 TransTasman Angus Cattle Evaluation

TACE	CE Dir	CE Dtrs	GL	BW	200	400	600	MCW	Milk	SS	DC
EBV	+2.0	+1.3	-6.3	+3.9	+46	+77	+99	+70	+6	+2.7	-5.4
ACC	66%	58%	83%	82%	83%	81%	82%	78%	75%	79%	43%
Perc	54	69	22	48	71	88	86	90	99	29	32

TACE	CWT	EMA	Rib	Rump	RBV	IMF	NFI-F	Doc	Claw	Angle	Leg
EBV	+54	+8.6	+1.0	-0.3	+2.1	-1.1	+0.04	+29	+0.58	+0.78	+1.00
ACC	71%	70%	70%	71%	62%	75%	63%	76%	57%	59%	54%
Perc	85	25	27	49	1	99	31	18	7	11	40

Selection Indexes

\$A	\$A-L
\$199	\$318
54	73

Traits Observed: BWT, 600WT, Genomics

Notes: 100% Millah Murrah breeding, first ever offering from his ABS secured sire, Brooklana Revolution R33. R33 being the result of Millah Murrah Prue M4 being bred to Millah Murrah Paratrooper, is leased for life to the Worlds largest provider of bovine genetics, ABS. Progeny from R33 will dominate our

Purchaser: \$

Lot 16 **BROOKLANA ROCKET MAN T65^{PV}** **AMQ22T65**

DOB: 04/10/2022 Registration Status: HBR Mating Type: AI Genetic Status: AMFU,CAFU,DDFU,NHFU

EF COMMANDO 1366^{PV}
 MILLAH MURRAH PARATROOPER P15^{PV}
 MILLAH MURRAH ELA M9^{PV}
Sire: NMMR38 MILLAH MURRAH ROCKET MAN R38^{PV}
 LD CAPITALIST 316^{PV}
 MILLAH MURRAH ABIGAIL P57^{PV}
 MILLAH MURRAH ABIGAIL H232^{PV}

PATHFINDER GENESIS G357^{PV}
 BROOKLANA GENESIS N9^{PV}
 BROOKLANA FLO-JO L11^{PV}
Dam: AMQR49 BROOKLANA CHAMPAGNE R49^{SV}
 BROOKLANA DREAM H29^{PV}
 BROOKLANA CHAMPAGNE N11 #
 BROOKLANA CHAMPAGNE J12 #

August 2024 TransTasman Angus Cattle Evaluation

TACE	CE Dir	CE Dtrs	GL	BW	200	400	600	MCW	Milk	SS	DC
EBV	+2.6	+3.3	-1.4	+6.1	+61	+106	+133	+117	+11	+2.9	-3.7
ACC	65%	55%	83%	82%	83%	82%	82%	78%	73%	80%	42%
Perc	48	48	89	89	11	14	21	27	91	24	72

TACE	CWT	EMA	Rib	Rump	RBV	IMF	NFI-F	Doc	Claw	Angle	Leg
EBV	+93	+10.0	-1.5	-0.3	+1.0	+1.0	+0.02	+11	+1.04	+0.96	+1.02
ACC	71%	71%	70%	71%	62%	75%	62%	78%	67%	67%	65%
Perc	4	15	81	49	20	81	29	85	85	47	47

Selection Indexes

\$A	\$A-L
\$227	\$388
24	20

Traits Observed: BWT, 200WT, 600WT, Genomics

Notes: Typifying all of the reasons why Millah Murrah has 26% of their 2024 bull sale offering, sired by Rocket Man. We have joined the elite cow families of Champagne and Dreamto the Powerhouse Pathfinder Genesis, then topped it off by introducing Rocket Man. Strong points of growth and

Purchaser: \$

Lot 17 **BROOKLANA COMMANDO T256^{PV}** **AMQ22T256**

DOB: 24/08/2022 Registration Status: HBR Mating Type: Natural Genetic Status: AMFU,CAFU,DD13%,NHFU

EF COMPLEMENT 8088^{PV}
 EF COMMANDO 1366^{PV}
 RIVERBEND YOUNG LUCY W1470 #
Sire: AMQQ14 BROOKLANA COMMANDO Q14^{SV}
 MILLAH MURRAH DIGBY D108^{PV}
 MILLAH MURRAH FLOWER G57^{PV}
 MILLAH MURRAH FLOWER E63^{PV}

PATHFINDER GENESIS G357^{PV}
 BROOKLANA GENESIS N16^{PV}
 BROOKLANA PRIDE H65^{PV}
Dam: AMQR149 BROOKLANA PRODIGY R149^{SV}
 BROOKLANA DREAM H29^{PV}
 BROOKLANA PRODIGY L15 #
 BROOKLANA PRODIGY H16 #

August 2024 TransTasman Angus Cattle Evaluation

TACE	CE Dir	CE Dtrs	GL	BW	200	400	600	MCW	Milk	SS	DC
EBV	+2.7	+4.2	-4.4	+4.4	+50	+83	+113	+96	+16	+1.9	-7.6
ACC	63%	53%	81%	81%	82%	79%	80%	76%	72%	77%	39%
Perc	47	38	50	59	52	75	63	59	56	58	5

TACE	CWT	EMA	Rib	Rump	RBV	IMF	NFI-F	Doc	Claw	Angle	Leg
EBV	+75	+9.4	+1.8	+2.8	+1.5	-0.6	+0.14	+25	-	-	-
ACC	67%	67%	67%	68%	58%	72%	59%	74%	-	-	-
Perc	30	19	15	9	6	99	42	33	-	-	-

Selection Indexes

\$A	\$A-L
\$229	\$380
22	25

Traits Observed: BWT, 600WT, Genomics

Notes: Sired by The result of a Millah Murrah embryo purchase, out of the legendary Millah Murrah Flower G57 by Paratroopers sire, EF Commando, coupled to a Pathfinder Genesis x Dream 24J cow. This is a carcass quality sire, as well as letting you access the top end of Millah Murrah genetics. This

Purchaser: \$

Lot 18 **BROOKLANA T77^{SV}** **AMQ22T77**

DOB: 11/11/2022 Registration Status: APR Mating Type: Natural Genetic Status: AM3%,CA3%,DD3%,NH3%

EF COMMANDO 1366^{PV}
 MILLAH MURRAH PARATROOPER P15^{PV}
 MILLAH MURRAH ELA M9^{PV}
Sire: AMQR23 BROOKLANA PARATROOPER R23^{SV}
 V A R GENERATION 2100^{PV}
 BROOKLANA DREAM N60 #
 BROOKLANA DREAM H28 #

TE MANIA EMPEROR E343^{PV}
 BROOKLANA EMPEROR L29^{PV}
 BROOKLANA DREAM H24^{PV}
Dam: AMQQ173 BROOKLANA Q173 #
 UNKNOWN
 BROOKLANA G23 #
 UNKNOWN

August 2024 TransTasman Angus Cattle Evaluation

TACE	CE Dir	CE Dtrs	GL	BW	200	400	600	MCW	Milk	SS	DC
EBV	-	-	-	-	-	-	-	-	-	-	-
ACC	-	-	-	-	-	-	-	-	-	-	-
Perc	-	-	-	-	-	-	-	-	-	-	-

TACE	CWT	EMA	Rib	Rump	RBV	IMF	NFI-F	Doc	Claw	Angle	Leg
EBV	-	-	-	-	-	-	-	-	-	-	-
ACC	-	-	-	-	-	-	-	-	-	-	-
Perc	-	-	-	-	-	-	-	-	-	-	-

Selection Indexes

\$A	\$A-L
-	-
-	-

Traits Observed: None

Notes: An APR with all the right inputs, including Brooklana Emperor L29, who was one of the reasons why we purchased Millah Murrah Prue M4, now joining his daughter, Q173 to Rocket Man, is another part of our plan. The opportunity to have these genetics working for you in your herd, is not often

Purchaser: \$

Lot 19 **BROOKLANA EMPEROR T46^{SV}** **AMQ22T46**

DOB: 18/03/2022 Registration Status: HBR Mating Type: Natural Genetic Status: AMFU,CAFU,DDFU,NHFU

TE MANIA EMPEROR E343^{PV}
 BROOKLANA EMPEROR L29^{PV}
 BROOKLANA DREAM H24^{PV}
Sire: AMQQ17 BROOKLANA EMPEROR Q17^{PV}
 COONAMBLE HECTOR H249^{SV}
 MILLAH MURRAH PRUE M4^{SV}
 MILLAH MURRAH PRUE F141^{PV}

TE MANIA EMPEROR E343^{PV}
 BROOKLANA EMPEROR L29^{PV}
 BROOKLANA DREAM H24^{PV}
Dam: AMQN19 BROOKLANA ROXY N19 #
 BROOKLANA STAR G57^{SV}
 BROOKLANA ROXY K11 #
 MEDLYN ROXY F89 #

August 2024 TransTasman Angus Cattle Evaluation

TACE	CE Dir	CE Dtrs	GL	BW	200	400	600	MCW	Milk	SS	DC
EBV	+1.9	+7.1	-3.7	+4.9	+56	+97	+134	+125	+12	+3.8	-3.9
ACC	62%	52%	80%	80%	81%	79%	80%	76%	71%	77%	39%
Perc	55	11	61	70	28	35	20	18	85	8	67

TACE	CWT	EMA	Rib	Rump	RBV	IMF	NFI-F	Doc	Claw	Angle	Leg
EBV	+65	+2.0	+0.3	-1.1	-0.3	+2.5	-0.53	+48	+0.62	+0.88	+1.06
ACC	68%	67%	67%	68%	58%	73%	60%	72%	61%	63%	60%
Perc	57	91	42	63	87	42	3	1	11	28	60

Selection Indexes

\$A	\$A-L
\$180	\$344
74	54

Traits Observed: BWT, 400WT, Genomics

Notes: Born out of season for us, being March 2022, has Emperor and Dream genetics on both sides of his breeding. Handy EBV traits which, typical of the Prue M4 x L29 packages, should result in outstanding daughters for your cow herd. Quiet, feed efficient, great feet, grow well. A lot to admire here.

Purchaser: \$

Lot 20 **BROOKLANA EMPEROR T56^{PV}** **AMQ22T56**

DOB: 05/05/2022 Registration Status: HBR Mating Type: Natural Genetic Status: AMFU,CAFU,DDFU,NHFU

TE MANIA EMPEROR E343^{PV}
 BROOKLANA EMPEROR L29^{PV}
 BROOKLANA DREAM H24^{PV}
Sire: AMQQ23 BROOKLANA EMPEROR Q23^{PV}
 COONAMBLE HECTOR H249^{SV}
 MILLAH MURRAH PRUE M4^{SV}
 MILLAH MURRAH PRUE F141^{PV}

SITZ TRAVELER 8180 #
 S A V 8180 TRAVELER 004 #
 BOYD FOREVER LADY 8003 #
Dam: NJGE17 MEDLYN REVLOE E17^{SV}
 TC FOREMAN 016 #
 MEDLYN REVLOE A36 #
 MEDLYN REVLOE R65+96 #

August 2024 TransTasman Angus Cattle Evaluation

TACE	CE Dir	CE Dtrs	GL	BW	200	400	600	MCW	Milk	SS	DC
EBV	-7.6	-2.1	-3.8	+6.1	+56	+97	+126	+92	+17	+2.2	-4.1
ACC	65%	56%	82%	82%	83%	81%	81%	78%	73%	79%	44%
Perc	96	89	60	89	25	36	34	66	50	47	63

TACE	CWT	EMA	Rib	Rump	RBV	IMF	NFI-F	Doc	Claw	Angle	Leg
EBV	+66	+12.7	-2.5	-3.1	+1.9	+0.4	-0.22	+13	+0.80	+0.82	+0.94
ACC	72%	71%	71%	72%	63%	75%	64%	74%	64%	64%	59%
Perc	54	4	93	89	2	91	11	79	41	17	23

Selection Indexes

\$A	\$A-L
\$201	\$311
52	77

Traits Observed: BWT, 200WT, Genomics

Notes: Sired by Brooklana Emperor Q23, purchased by Roseleigh Angus, Pinnaroo SA, recently resold to Venturon Livestock, WA as a 5 y.o. for \$20,000. Dam, Revlon E17, still in our herd, daughter of SAV Traveller 004, the legendary sire, credited as being the foundation sire for SAV. Last in the draft but

Purchaser: \$

TRANSPORTATION

Travel free subsidy 500kms from Brooklana Angus. Interstate purchased lots will be freight free to Wagga Wagga and Toowoomba.

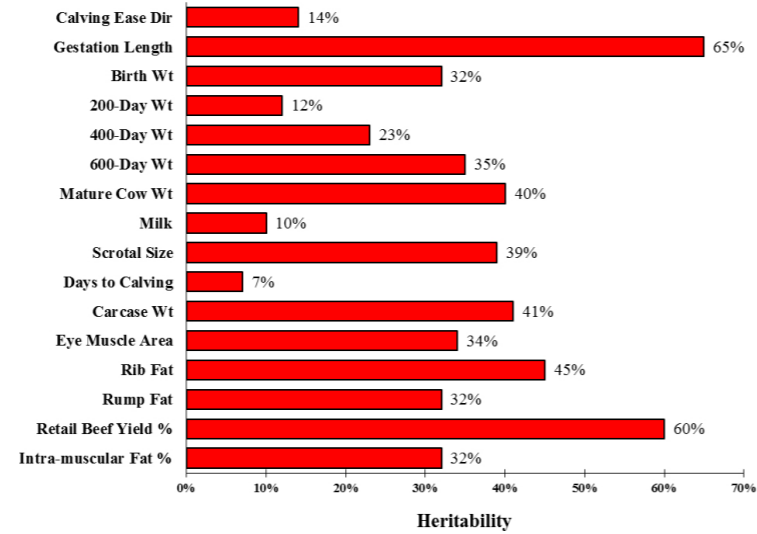
Heritabilities of Traits in Angus Group TACE (TransTasman Angus Cattle Evaluation)

Only part of the variation that we observe among animals is due to genetic differences. The majority of the variation is generally due to non-genetic factors such as differences in environment and nutrition.

The degree to which genetic differences influence performance varies from trait to trait. This is explained by differences in the “heritability” of the traits.

Growth and carcass traits tend to have moderate to high heritabilities (i.e. 20 to 60%), whilst maternal traits have low heritabilities (10% or lower).

Angus TACE takes into account the different degrees of heritability of various traits, and the known genetic relationships between the traits.



Brooklana Angus Bull Stud Guarantee

Any Brooklana Angus bull that proves to be structurally unsound, infertile or incapable of service is guaranteed for up to 2 years from the date of sale. The guarantee is contingent upon the purchasers managing the purchased bull(s) in accordance with the attached, Brooklana Angus Bull Management Plan.

Under these circumstances Brooklana Angus Stud will: REPLACE THE BULL WITH A SATISFACTORY SUBSTITUTE IF AVAILABLE, OR ISSUE A REFUND EQUAL TO THE VALUE REMAINING *see below, less the salvage value.

The guarantee covers the purchase value of the bull, without interest, cost and damages. The guarantee shall apply providing the bull's incapacity is not caused by injury or disease contracted since leaving Brooklana Stud, the value remaining is calculated on the basis that the guarantee is reduced by one half of the purchaser price for each year of service from the sale date. The purchaser on request must supply a Veterinary certificate. Any dispute that may arise shall be settled by a mutually agreed arbitrator and must be lodged within 12 calendar months from the date of sale.

DISCLAIMER: All possible care has been taken by the vendor to ensure that all information provided relative to this sale is correct at the date that the information was provided. Purchasers are encouraged to seek independent verification of the publication of any marketing material associated with this sale. The vendors and their agents do not accept any responsibility for any representation made or contained within marketing material applicable to this sale.



Ray White Rural Dorrigo Bellingen

Our services

RayWhite

- Rural Property Sales
- Residential & Lifestyle Property Sales
- Property & Commercial Management
- Livestock Sales
- Clearing Sales
- AuctionsPlus Accreditations



How to register as an AuctionsPlus user/buyer

1. To sign up to AuctionsPlus, fill in your details and create a security PIN.
2. Verify your email and phone number.
3. Follow the steps to verify your ID.
4. Enter your PIC number, ABN and business details if relevant.
5. Carefully read and accept our user rules and responsibilities.
6. Complete the user quiz.
7. Submit your request to our team.



Scan to sign up now



Scan to see detailed step by step instructions

www.auctionsplus.com.au



(02) 9262 4222



L to R - Millah Murrah Prue M4, daughters Brooklana Prue Q3 by Chisum 255, Brooklana Prue Q12 by Brooklana Emperor L29. Granddaughter Brooklana Prue S8E by Paratrooper out of Q12.



BROOKLANA EMPEROR Q23

Brooklana Emperor Q23, Prue M4 son, sire of lot 20.
Flush brother of Q12 and Q17



BROOKLANA EMPEROR Q17

Brooklana Emperor Q17, Prue M4 son, sire of lots 8,11,13 19,
flush brother to Q12 and Q23



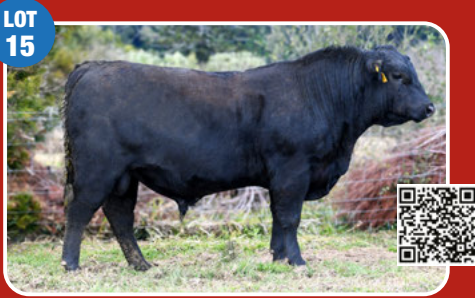
BROOKLANA ROCKET MAN T61



BROOKLANA COMMANDO T255



BROOKLANA EMPEROR T100



BROOKLANA REVOLUTION T76



BROOKLANA ROCKET MAN T65



BROOKLANA EMPEROR T56

BROOKLANA ANGUS STUD

244 Whitneys Road Brooklana NSW 2450 | www.brooklanaangus.com.au

Directions: Approx 45 min. from Dorrigo, 50 min. from Coffs Harbour. Google Maps search: Brooklana Angus Stud



**BROOKLANA
ANGUS STUD
BULL SALE**

View online at: Brooklana Angus Stud, Ray White Dorrigo, Angus Australia, Auctions Plus



**REGISTER AND
BID ONLINE**

www.auctionsplus.com.au



Enquiries: Principal

Rodger Pryce

Brooklana Angus

0411 396 939

www.brooklanaangus.com.au



Enquiries: Agent

Tim Bayliss

Ray White Dorrigo

0439 009 414

raywhiteruraldorrigo.com.au