



BROOKLANA ANGUS

**32
SIRES
SALE**



FOR MORE
INFORMATION



Tuesday 12th Sept 2023 from 12 noon

244 Whitneys Road Brooklana NSW 2450 | www.brooklanaangus.com.au

Directions: Approx 45 min. from Dorrigo, 50 min. from Coffs Harbour. Google Maps search: Brooklana Angus Stud

Sale Lot 888: All descriptions, photos & videos available through Auctions Plus website: www.auctionsplus.com.au

 AuctionsPlus

**REGISTER AND
BID ONLINE**

www.auctionsplus.com.au



Enquiries: Principal

Rodger Pryce

Brooklana Angus

0411 396 939

www.brooklanaangus.com.au



Enquiries: Agent

Tim Bayliss

Ray White Dorrigo

0439 009 414

raywhiteruraldorrigo.com.au



The decision as to what to breed with what at Brooklana is taken at least 3 years before our annual sales. How the genetics will assist, with what it is that we are trying to achieve must align with our own objectives. Trying to produce a product that meets the needs of our customer base begins with the cow herd, as those cows are with us 24/7 and usually are long term residents. We change our bulls to mate with our cows. Not the other way around So the better the cow herd, the closer to success we get.

It is obvious that we align genetically with preferred breeders, Millah Murrah especially. You cannot achieve the success enjoyed by Millah Murrah, year after year, without following a breeding programme that works unbelievably well.

Tim Bayliss is our on-farm judge. He makes the phenotype recommendations and in my opinion, he is the perfect choice, thanks Tim.

When I saw Millah Murrah Prue M4 in 2017 it was a 'must have' moment. The opportunity to build a stud around her was, for me, a lightbulb moment. Ten of the bulls offered at this sale carry Prue's genes with Paratrooper and Chisum, sometimes blended, being most dominant. Her breeding influence is now without question. Bred to three sires within the herd, the progeny stands out, as can be seen at this sale.

Progeny from Prue x Paratrooper A.I., sire Revolution R33, is on the ground at Brooklana. Could be interesting - ABS have his semen.

Our thanks to you, for your support, we wish you every success with your future breeding programmes. Also, to those who are always with us throughout the year, our heartfelt thanks.

Rodger Pryce



Millah Murrah Prue M4

Owned by Brooklana Angus since 2017 when purchased for an Australasian record price for the Angus breed at \$190,000. Described by her breeder as probably the best Angus cow in Australasia, Prue is having a major impact at Brooklana and elsewhere, having 6 daughters, 7 sons, including Brooklana Revolution R33, a Paratrooper son, under a lifetime lease to ABS. Prue M4 will be on display on the open and sale days at Brooklana.

References



Millah Murrah Paratrooper P15

4945 progeny registered around the World, his genetics dominate the 2023 Millah Murrah Bull Sale Catalogue. The blending of Paratrooper to Prue M4 and her daughters is set to impact through both phenotype and performance. His 4 sons in our sale combine a world class genetics on both sides of the pedigrees.



S Chisum 255

Chisum imparts calving ease and quality carcass traits, together with next level docility into his progeny. Chisum features as a sale topper in 2023 bull sales, he has a prominent presence in this sale catalogue. the recommendation to use Chisum over Prue M4 was on the money, as usual, thankfully we used him elsewhere in our stud.



Brooklana Prue Q3

The result of Millah Murrah M4 mated to Chisum, which has produced an outstanding young cow. Flushing her to Paratrooper was a no brainer, her 3 Paratrooper sons in this sale will impact on the herds of whoever ends up with them. Success Leaves Clues - the answers are found in the females.



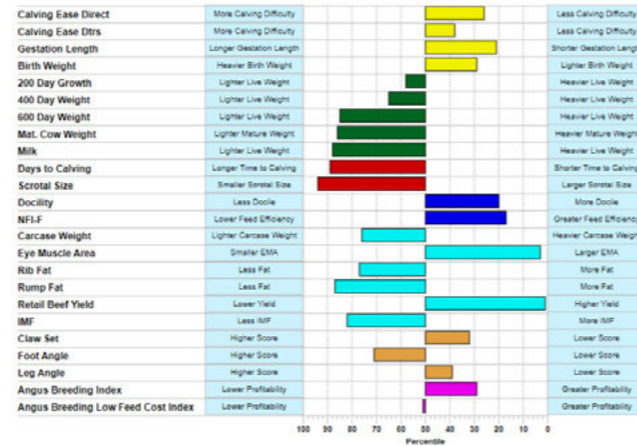
LD Capitalist 316

Millah Murrah Rocket Man R38 is out of a Capitalist daughter, he also features heavily throughout this catalogue. Lot 12 is a Prue M3 son by a Capitalist son out of a Hallmark daughter. Looks pretty good. With over 3600 progeny registered in Australia, Capitalist is a well proven performer.



BROOKLANA CHISUM S19

VIDEO LINK:



Lot 1

BROOKLANA CHISUM S19 SV

AMQ21S19

DOB: 08/08/2021

Registration Status: HBR

Mating Type: Natural

Genetic Status: AMFU,CAFU,DDFU,NHFU

S CHISUM 6175 PV
S CHISUM 255 SV
S BLOSSOM 0278 #

TE MANIA INFINITY 04 379 AB #
BROOKLANA INFINITY L39 SV
BROOKLANA VENUS H11 #
BROOKLANA DREAM H29 PV
BROOKLANA TINKABELL L25 #
BROOKLANA TINKABELL H37 #

Sire: AMQQ24 BROOKLANA CHISUM Q24 PV
MILLAH MURRAH KLOONEY K42 PV
MILLAH MURRAH FLOWER N30 PV
MILLAH MURRAH FLOWER L7 PV

Dam: AMQQ123 BROOKLANA TINKABELL Q123 #
BROOKLANA DREAM H29 PV
BROOKLANA TINKABELL L25 #
BROOKLANA TINKABELL H37 #

Mid August 2023 TransTasman Angus Cattle Evaluation

TACE	CE Dir	CE Dtrs	GL	BW	200	400	600	MCW	Milk	SS	DC
EBV	+5.4	+4.2	-6.7	+3.1	+49	+85	+98	+74	+12	+0.5	-3.0
ACC	51%	40%	69%	70%	68%	67%	70%	63%	55%	70%	32%
Perc	27	37	21	29	57	65	85	87	88	94	88

TACE	CWT	EMA	Rib	Rump	RBV	IMF	NFI-F	Doc	Claw	Angle	Leg
EBV	+57	+13.0	-1.4	-2.7	+2.2	+0.9	-0.10	+27	+0.76	+1.06	+1.00
ACC	56%	55%	56%	57%	50%	60%	47%	38%	61%	61%	57%
Perc	76	3	79	87	1	82	17	21	32	71	39

Selection Indexes

\$A	\$A-L
\$221	\$346
26	49

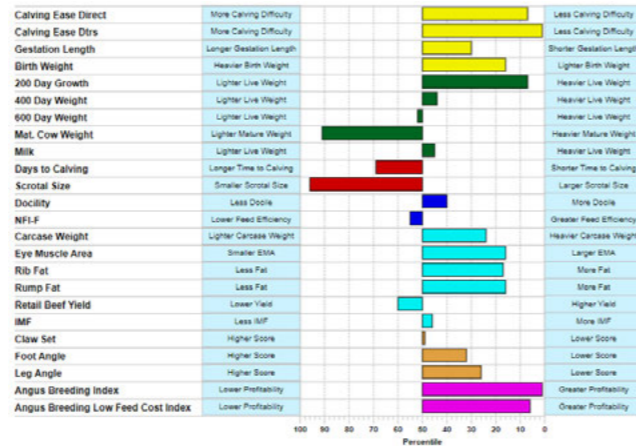
Traits Observed: BWT, 400WT, 600WT(x2), SC, Scan(EMA, Rib, Rump, IMF), Genomics

Notes: World record breaking 2023 Female sale, Millah Murrah Flower N30 is the granddam, the showstopper realising \$140,000 for a half share in future embryos. Add S Chisum 255, into the sire line, complimented by BT Right Time 24J, plus the sought after Dream female family, this bull is the goods. Scanned with a top cohort score of 123 for EMA, 7.0 for IMF. All calving indexes well above average, a top class heifer bull.
Purchaser: \$



BROOKLANA CHISUM S9E

VIDEO LINK:



Lot 2

BROOKLANA CHISUM S9E PV

AMQ21S9E

DOB: 08/12/2021

Registration Status: HBR

Mating Type: ET

Genetic Status: AMFU,CAFU,DD13%,NHFU

S ALLIANCE 3313 #
S CHISUM 6175 PV
S GLORIA 464 #

EF COMPLEMENT 8088 PV
EF COMMANDO 1366 PV
RIVERBEND YOUNG LUCY W1470 #
MILLAH MURRAH DIGBY D108 PV
MILLAH MURRAH FLOWER G57 PV
MILLAH MURRAH FLOWER E63 PV

Sire: USA17298481 S CHISUM 255 SV
SHIPWHEEL CHINOOK #
S BLOSSOM 0278 #
S BLOSSOM 8378 #

Dam: AMQQ6 BROOKLANA FLOWER Q6 SV
MILLAH MURRAH DIGBY D108 PV
MILLAH MURRAH FLOWER G57 PV
MILLAH MURRAH FLOWER E63 PV

Mid August 2023 TransTasman Angus Cattle Evaluation

TACE	CE Dir	CE Dtrs	GL	BW	200	400	600	MCW	Milk	SS	DC
EBV	+8.7	+11.1	-6.0	+2.3	+62	+92	+115	+68	+18	+0.2	-4.0
ACC	60%	48%	72%	74%	73%	72%	74%	69%	65%	74%	39%
Perc	7	1	30	16	7	45	54	91	43	97	69

TACE	CWT	EMA	Rib	Rump	RBV	IMF	NFI-F	Doc	Claw	Angle	Leg
EBV	+75	+9.7	+1.6	+1.8	+0.4	+2.2	+0.20	+22	+0.84	+0.90	+0.98
ACC	63%	62%	63%	63%	58%	66%	52%	53%	67%	67%	59%
Perc	25	15	16	16	53	46	53	40	49	32	32

Selection Indexes

\$A	\$A-L
\$274	\$415
1	6

Traits Observed: BWT, 400WT(x2), 600WT, SC, Scan(EMA, Rib, Rump, IMF), Genomics

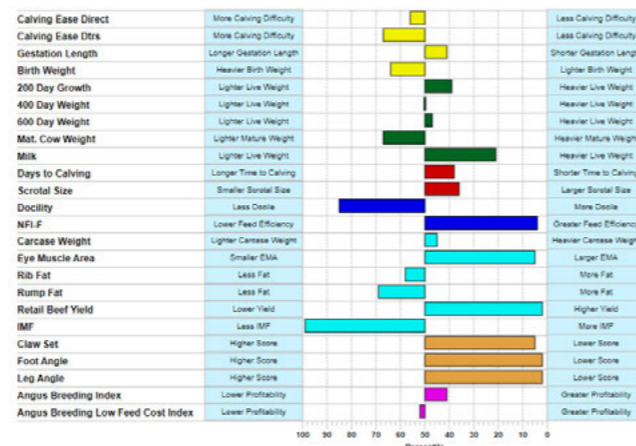
Notes: Millah Murrah Flower dam by Paratrooper's sire, coupled to S Chisum 255 producing a real stunner with calving ease EBVs, yet top weight gains. S9E's dam is the result of an embryo purchased from Millah Murrah. Soft, smooth coat, totally docile.

Purchaser: \$



BROOKLANA CAPITALIST S23

VIDEO LINK:



Lot 3

BROOKLANA CAPITALIST S23 PV

AMQ21S23

DOB: 26/09/2021

Registration Status: HBR

Mating Type: Natural

Genetic Status: AMFU,CAFU,DDFU,NHFU

CONNEALY CAPITALIST 028 #
LD CAPITALIST 316 PV
LD DIXIE ERICA 2053 #

TE MANIA EMPEROR E343 PV
BROOKLANA EMPEROR L29 PV
BROOKLANA DREAM H24 PV
COONAMBLE HECTOR H249 SV
MILLAH MURRAH PRUE M4 SV
MILLAH MURRAH PRUE F141 PV

Sire: AMQQ25 BROOKLANA CAPITALIST Q25 PV
ASCOT HALLMARK H147 PV
MILLAH MURRAH FLOWER N91 SV
MILLAH MURRAH FLOWER G56 PV

Dam: AMQQ12 BROOKLANA MM PRUE Q12 PV
MILLAH MURRAH PRUE M4 SV
MILLAH MURRAH PRUE F141 PV

Mid August 2023 TransTasman Angus Cattle Evaluation

TACE	CE Dir	CE Dtrs	GL	BW	200	400	600	MCW	Milk	SS	DC
EBV	+2.1	+0.8	-5.3	+4.7	+52	+90	+118	+88	+21	+2.4	-5.0
ACC	55%	46%	67%	71%	70%	68%	72%	66%	59%	71%	37%
Perc	56	71	41	64	40	50	49	69	20	36	41

TACE	CWT	EMA	Rib	Rump	RBV	IMF	NFI-F	Doc	Claw	Angle	Leg
EBV	+68	+11.9	-0.4	-1.4	+1.8	-0.9	-0.31	+12	+0.54	+0.62	+0.76
ACC	59%	58%	60%	60%	53%	63%	51%	41%	63%	63%	60%
Perc	45	5	58	69	2	99	6	86	5	2	2

Selection Indexes

\$A	\$A-L
\$208	\$341
41	53

Traits Observed: BWT, 400WT, 600WT(x2), SC, Scan(EMA, Rib, Rump, IMF), Genomics

Notes: Millah Murrah Prue M4 genetics via daughter Prue Q12 featured in the breeding. S23 is sired by a Capitalist son out of the Millah Murrah Flower family, the best of Millah Murrah genes feature on both sides of the pedigree. Conservative calving, high growth rates, carcass weight, EMA, RBV, while at the same time being in the top 12% for feed conversion.

Purchaser: \$



BROOKLANA MM PARATROOPER S1E VIDEO LINK:



Lot 4 BROOKLANA MM PARATROOPER S1E^{PV} AMQ21S1E

DOB: 30/11/2021 Registration Status: HBR Mating Type: ET Genetic Status: AMFU,CAFU,DDFU,NHFU

EF COMPLEMENT 8088^{PV} S CHISUM 6175^{PV}
 EF COMMANDO 1366^{PV} S CHISUM 255^{SV}
 RIVERBEND YOUNG LUCY W1470[#] S BLOSSOM 0278[#]
Sire: NMMP15 MILLAH MURRAH PARATROOPER P15^{PV} **Dam:** AMQQ3 BROOKLANA MM PRUE Q3^{PV}
 MILLAH MURRAH HIGHLANDER G18^{SV} COONAMBLE HECTOR H249^{SV}
 MILLAH MURRAH ELA M9^{PV} MILLAH MURRAH PRUE M4^{SV}
 MILLAH MURRAH ELA K127^{SV} MILLAH MURRAH PRUE F141^{PV}

Mid August 2023 TransTasman Angus Cattle Evaluation

TACE	CE Dir	CE Dtrs	GL	BW	200	400	600	MCW	Milk	SS	DC
EBV	+9.9	+9.2	-10.0	+2.2	+65	+110	+139	+120	+20	+2.2	-4.5
ACC	62%	49%	72%	74%	74%	72%	74%	69%	63%	74%	37%
Perc	3	3	2	15	4	7	12	20	26	44	55

TACE	CWT	EMA	Rib	Rump	RBY	IMF	NFI-F	Doc	Claw	Angle	Leg
EBV	+89	+6.7	-1.3	-2.8	+1.1	+0.2	-0.31	+24	+0.84	+0.80	+1.26
ACC	62%	62%	63%	63%	57%	65%	51%	57%	69%	69%	66%
Perc	5	43	77	88	14	93	6	30	49	14	97

Selection Indexes

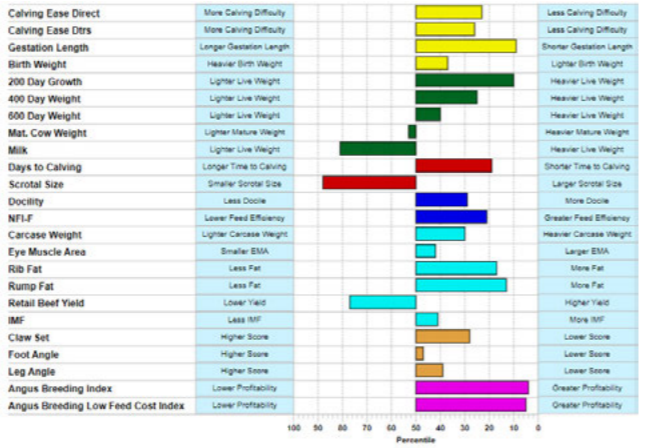
\$A	\$A-L
\$238	\$419
13	5

Notes: Millah Murrah top of the crop. Sired by Millah Murrah Paratrooper out of a Millah Murrah Prue M4 daughter sired by S Chisum 255. A package that lives up to its promise, added to by top drawer calving ease and growth EBVs. A world wide first of this genetic package.

Purchaser: \$



BROOKLANA PARATROOPER S2E VIDEO LINK:



Lot 5 BROOKLANA PARATROOPER S2E^{PV} AMQ21S2E

DOB: 06/12/2021 Registration Status: HBR Mating Type: ET Genetic Status: AMFU,CAFU,DDFU,NHFU

EF COMPLEMENT 8088^{PV} S CHISUM 6175^{PV}
 EF COMMANDO 1366^{PV} S CHISUM 255^{SV}
 RIVERBEND YOUNG LUCY W1470[#] S BLOSSOM 0278[#]
Sire: NMMP15 MILLAH MURRAH PARATROOPER P15^{PV} **Dam:** AMQQ3 BROOKLANA MM PRUE Q3^{PV}
 MILLAH MURRAH HIGHLANDER G18^{SV} COONAMBLE HECTOR H249^{SV}
 MILLAH MURRAH ELA M9^{PV} MILLAH MURRAH PRUE M4^{SV}
 MILLAH MURRAH ELA K127^{SV} MILLAH MURRAH PRUE F141^{PV}

Mid August 2023 TransTasman Angus Cattle Evaluation

TACE	CE Dir	CE Dtrs	GL	BW	200	400	600	MCW	Milk	SS	DC
EBV	+5.9	+5.1	-7.9	+3.5	+60	+98	+120	+97	+13	+0.9	-5.8
ACC	63%	49%	72%	75%	74%	72%	74%	69%	63%	74%	37%
Perc	23	27	10	37	10	27	43	55	79	88	21

TACE	CWT	EMA	Rib	Rump	RBY	IMF	NFI-F	Doc	Claw	Angle	Leg
EBV	+72	+6.7	+1.6	+2.1	+0.0	+2.4	-0.07	+24	+0.74	+0.96	+1.00
ACC	63%	63%	64%	64%	58%	65%	51%	57%	68%	68%	64%
Perc	32	43	16	13	76	41	20	30	28	47	39

Selection Indexes

\$A	\$A-L
\$255	\$415
5	7

Notes: Flush brother to the previous lot, could just about be identical, they are so even. The Prue M4 daughter, Q3, the dam, blended beautifully with S Chisum 255. Add Paratrooper, as the sire of these flush brothers and the package is complete.

Purchaser: \$



BROOKLANA PARATROOPER S13E VIDEO LINK:



Lot 6 BROOKLANA PARATROOPER S13E^{PV} AMQ21S13E

DOB: 12/12/2021 Registration Status: HBR Mating Type: ET Genetic Status: AMFU,CAFU,DDFU,NHFU

EF COMPLEMENT 8088^{PV} BOOROOMOOKA THEO T030^{SV}
 EF COMMANDO 1366^{PV} MILLAH MURRAH KLOONEY K42^{PV}
 RIVERBEND YOUNG LUCY W1470[#] MILLAH MURRAH PRUE H4^{SV}
Sire: NMMP15 MILLAH MURRAH PARATROOPER P15^{PV} **Dam:** AMQQ31 BROOKLANA MM PRUE Q31^{PV}
 MILLAH MURRAH HIGHLANDER G18^{SV} MILLAH MURRAH KRUSE TIME K400^{PV}
 MILLAH MURRAH ELA M9^{PV} MILLAH MURRAH PRUE N35^{PV}
 MILLAH MURRAH ELA K127^{SV} MILLAH MURRAH PRUE L106^{PV}

Mid August 2023 TransTasman Angus Cattle Evaluation

TACE	CE Dir	CE Dtrs	GL	BW	200	400	600	MCW	Milk	SS	DC
EBV	+4.7	+1.2	-4.8	+3.8	+53	+99	+125	+120	+17	+2.3	-5.4
ACC	63%	51%	73%	75%	74%	73%	75%	70%	64%	75%	39%
Perc	34	67	49	44	37	26	32	19	54	40	30

TACE	CWT	EMA	Rib	Rump	RBY	IMF	NFI-F	Doc	Claw	Angle	Leg
EBV	+72	+3.2	-0.1	-1.2	+0.3	+3.3	+0.41	+19	+1.00	+0.82	+1.18
ACC	64%	64%	65%	65%	59%	67%	53%	58%	68%	68%	66%
Perc	34	84	50	66	59	20	77	53	79	17	88

Selection Indexes

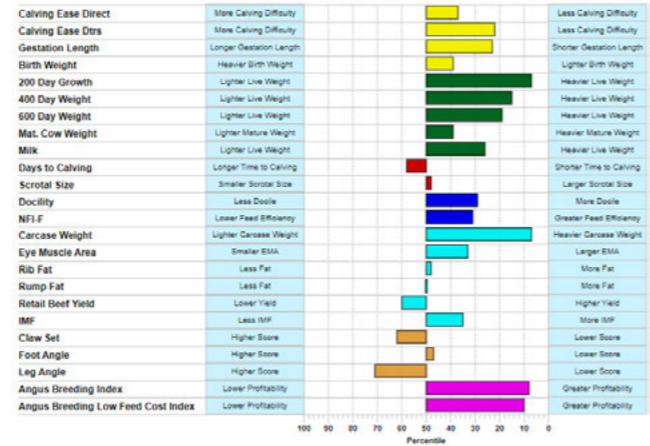
\$A	\$A-L
\$211	\$378
37	24

Notes: 100% Millah Murrah top draw breeding with Paratrooper the sire, Prue Q31 the dam, who is a Kruse Time K400 x Klooney K42 daughter. EBVs indicate moderate calving ease with explosive growth. Selection indexes show high breeding profitability.

Purchaser: \$



BROOKLANA PARATROOPER S7E VIDEO LINK:



Lot 7 BROOKLANA PARATROOPER S7E^{PV} AMQ21S7E

DOB: 07/12/2021 Registration Status: HBR Mating Type: ET Genetic Status: AMFU,CAFU,DDFU,NHFU

EF COMPLEMENT 8088^{PV} S CHISUM 6175^{PV}
 EF COMMANDO 1366^{PV} S CHISUM 255^{SV}
 RIVERBEND YOUNG LUCY W1470 # S BLOSSOM 0278 #
Sire: NMMP15 MILLAH MURRAH PARATROOPER P15^{PV} **Dam:** AMQQ3 BROOKLANA MM PRUE Q3^{PV}
 MILLAH MURRAH HIGHLANDER G18^{SV} COONAMBLE HECTOR H249^{SV}
 MILLAH MURRAH ELA M9^{PV} MILLAH MURRAH PRUE M4^{SV}
 MILLAH MURRAH ELA K127^{SV} MILLAH MURRAH PRUE F141^{PV}

Mid August 2023 TransTasman Angus Cattle Evaluation

TACE	CE Dir	CE Dtrs	GL	BW	200	400	600	MCW	Milk	SS	DC
EBV	+4.3	+5.5	-6.5	+3.6	+62	+103	+132	+105	+20	+2.1	-4.4
ACC	63%	50%	72%	74%	74%	72%	74%	69%	63%	74%	37%
Perc	37	23	23	39	8	17	20	41	23	48	58

TACE	CWT	EMA	Rib	Rump	RBY	IMF	NFI-F	Doc	Claw	Angle	Leg
EBV	+86	+7.6	+0.0	-0.3	+0.3	+2.6	+0.04	+24	+0.90	+0.96	+1.10
ACC	63%	62%	63%	63%	57%	65%	51%	57%	69%	69%	66%
Perc	7	33	48	49	59	35	32	30	62	47	71

Selection Indexes

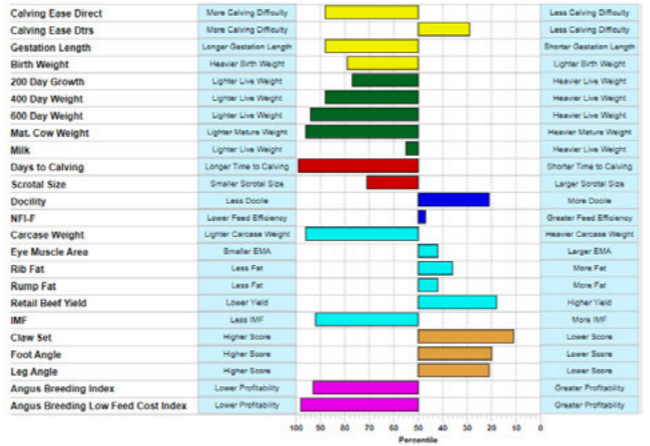
\$A	\$A-L
\$245	\$403
9	10

Traits Observed: BWT, 400WT(x2), 600WT, SC, Scan(EMA, Rib, Rump, IMF), Genomics

Notes: Millah Murrah Paratrooper out of Millah Murrah Prue Q3, the 3rd flush brother in the sale. The captain's pick makes for an outstanding young sire with a great future. All flush brothers have impeccable temperament, phenotypically excellent. Flush brothers are all very difficult to separate, all phenotypically correct, all quiet, all eye catching. As expected, genetically pretty much the same. Very little remains to be said about the sire, Millah Murrah Paratrooper P15, it has all been said. However, as a sire, he imparts
 Purchaser: \$



BROOKLANA CHISUM S6 VIDEO LINK:



Lot 8 BROOKLANA CHISUM S6^{PV} AMQ21S6

DOB: 08/08/2021 Registration Status: APR Mating Type: AI Genetic Status: AMFU,CAFU,DDFU,NHFU

S ALLIANCE 3313 #
 S CHISUM 6175^{PV} UNKNOWN
 S GLORIA 464 #
Sire: USA17298481 S CHISUM 255^{SV} **Dam:** AMQQ116 BROOKLANA DREAM Q116^E
 SHIPWHEEL CHINOOK #
 S BLOSSOM 0278 # UNKNOWN
 S BLOSSOM 8378 #

Mid August 2023 TransTasman Angus Cattle Evaluation

TACE	CE Dir	CE Dtrs	GL	BW	200	400	600	MCW	Milk	SS	DC
EBV	-3.7	+4.9	-1.9	+5.5	+44	+74	+87	+59	+16	+1.5	-0.4
ACC	55%	43%	70%	72%	72%	70%	73%	67%	62%	73%	35%
Perc	89	29	88	79	76	88	95	96	60	71	99

TACE	CWT	EMA	Rib	Rump	RBY	IMF	NFI-F	Doc	Claw	Angle	Leg
EBV	+44	+6.6	+0.5	+0.2	+1.0	+0.3	+0.17	+27	+0.64	+0.84	+0.94
ACC	61%	60%	62%	62%	55%	65%	49%	45%	64%	64%	56%
Perc	96	44	36	40	18	92	49	21	13	20	21

Selection Indexes

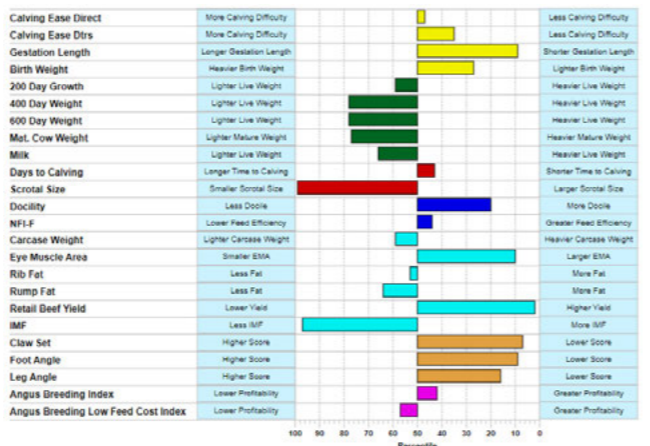
\$A	\$A-L
\$138	\$217
93	98

Traits Observed: BWT, 400WT, 600WT(x2), SC, Scan(EMA, Rib, Rump, IMF), Genomics

Notes: Recorded as being a S Chisum 255 son out of a cow by Brooklana Emperor M3. DNA results have proven to be inconclusive, however this bull by his phenotype earns his place in the top half of the offering.
 Purchaser: \$



BROOKLANA CHISUM A S19A VIDEO LINK:



Lot 9 BROOKLANA CHISUM A S19A^{PV} AMQ21S19A

DOB: 05/08/2021 Registration Status: HBR Mating Type: Natural Genetic Status: AMFU,CAFU,DDFU,NHFU

S CHISUM 6175^{PV} TE MANIA EMPEROR E343^{PV}
 S CHISUM 255^{SV} BROOKLANA EMPEROR L29^{PV}
 S BLOSSOM 0278 # BROOKLANA DREAM H24^{PV}
Sire: AMQQ20 BROOKLANA CHISUM Q20^{PV} **Dam:** AMQQ156 BROOKLANA FLO-JO Q156^{SV}
 COONAMBLE HECTOR H249^{SV} BROOKLANA HERO H7^{SV}
 MILLAH MURRAH PRUE M4^{SV} BROOKLANA FLO JO K9 #
 MILLAH MURRAH PRUE F141^{PV} BROOKLANA FLO-JO G31 #

Mid August 2023 TransTasman Angus Cattle Evaluation

TACE	CE Dir	CE Dtrs	GL	BW	200	400	600	MCW	Milk	SS	DC
EBV	+3.2	+4.0	-8.0	+3.1	+48	+79	+103	+82	+15	-0.5	-4.8
ACC	54%	43%	67%	70%	69%	67%	71%	64%	57%	71%	33%
Perc	47	39	9	29	61	80	78	78	64	99	46

TACE	CWT	EMA	Rib	Rump	RBY	IMF	NFI-F	Doc	Claw	Angle	Leg
EBV	+63	+10.6	-0.2	-1.1	+1.8	-0.2	+0.15	+27	+0.58	+0.76	+0.92
ACC	57%	57%	59%	59%	51%	62%	49%	36%	63%	63%	59%
Perc	60	10	53	64	2	97	46	20	7	9	16

Selection Indexes

\$A	\$A-L
\$206	\$333
43	59

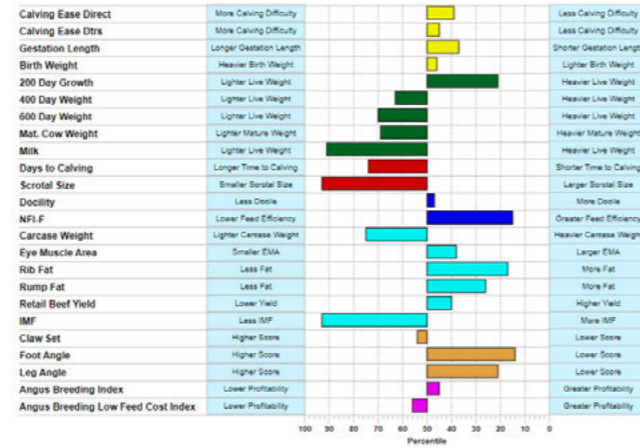
Traits Observed: BWT, 400WT, 600WT(x2), SC, Scan(EMA, Rib, Rump, IMF), Genomics

Notes: Sire of this lot was our high selling bull in 2021, a son of Millah Murrah Prue M4 by S Chisum 255, he was purchased by overseas interests, a very handy opportunity. 1 of only 4 Q20 sons in existence, Q20 now deceased. Outstanding sire prospect.
 Purchaser: \$



BROOKLANA CHISUM S6E

VIDEO LINK:



Lot 10

BROOKLANA CHISUM S6E SV

AMQ21S6E

DOB: 06/12/2021

Registration Status: HBR

Mating Type: ET

Genetic Status: AMFU,CAFU,DDFU,NHFU

S ALLIANCE 3313 #
S CHISUM 6175 PV
S GLORIA 464 #
S BLOSSOM 0278 #
S BLOSSOM 8378 #

SITZ TRAVELER 8180 #
S A V 8180 TRAVELER 004 #
BOYD FOREVER LADY 8003 #
TC FOREMAN 016 #
MEDLYN REVLO A36 #
MEDLYN REVLO R65+96 #

Sire: USA17298481 S CHISUM 255 SV

Dam: NJGE17 MEDLYN REVLO E17 SV

Mid August 2023 TransTasman Angus Cattle Evaluation

TACE	CE Dir	CE Dtrs	GL	BW	200	400	600	MCW	Milk	SS	DC
EBV	+4.0	+3.4	-5.5	+3.8	+56	+85	+106	+87	+11	+0.5	-3.7
ACC	62%	51%	74%	76%	75%	73%	75%	71%	67%	75%	43%
Perc	40	45	37	44	22	64	72	71	91	94	76

TACE	CWT	EMA	Rib	Rump	RBY	IMF	NFI-F	Doc	Claw	Angle	Leg
EBV	+57	+7.1	+1.6	+1.1	+0.6	+0.2	-0.12	+20	+0.84	+0.80	+0.94
ACC	66%	65%	66%	66%	61%	68%	55%	54%	68%	68%	60%
Perc	76	38	16	25	40	93	16	47	49	14	21

Selection Indexes

\$A	\$A-L
\$202	\$333
49	59

Traits Observed: BWT, 400WT(x2), 600WT, SC, Scan(EMA, Rib, Rump, IMF), Genomics

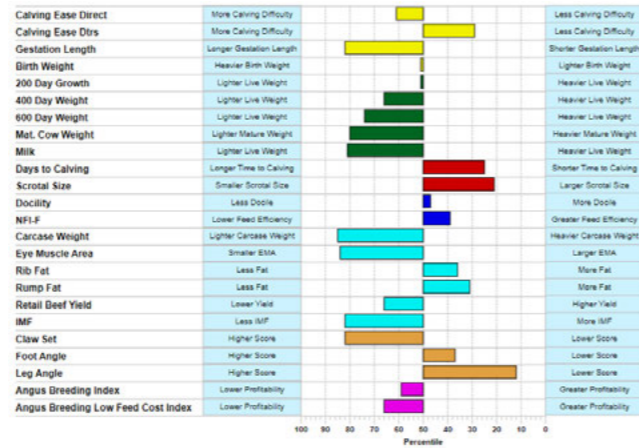
Notes: Dam is a daughter of the legendary SAV Traveller 004. Coupled with S Chisum 255, this is a powerful package with carcase plus traits. Moderate calving ease, so has a widespread appeal.

Purchaser: \$



BROOKLANA CHISUM S14E

VIDEO LINK:



Lot 11

BROOKLANA CHISUM S14E SV

AMQ21S14E

DOB: 13/12/2021

Registration Status: HBR

Mating Type: ET

Genetic Status: AMFU,CAFU,DDFU,NHFU

S ALLIANCE 3313 #
S CHISUM 6175 PV
S GLORIA 464 #
S BLOSSOM 0278 #
S BLOSSOM 8378 #

SITZ TRAVELER 8180 #
S A V 8180 TRAVELER 004 #
BOYD FOREVER LADY 8003 #
TC FOREMAN 016 #
MEDLYN REVLO A36 #
MEDLYN REVLO R65+96 #

Sire: USA17298481 S CHISUM 255 SV

Dam: NJGE17 MEDLYN REVLO E17 SV

Mid August 2023 TransTasman Angus Cattle Evaluation

TACE	CE Dir	CE Dtrs	GL	BW	200	400	600	MCW	Milk	SS	DC
EBV	+1.3	+4.6	-2.5	+4.0	+50	+85	+105	+81	+13	+2.8	-5.5
ACC	62%	51%	74%	75%	74%	73%	75%	70%	66%	75%	43%
Perc	63	32	83	48	52	67	75	80	82	23	28

TACE	CWT	EMA	Rib	Rump	RBY	IMF	NFI-F	Doc	Claw	Angle	Leg
EBV	+53	+3.3	+0.5	+0.6	+0.3	+0.9	+0.09	+20	+1.02	+0.92	+0.92
ACC	66%	65%	66%	66%	61%	68%	55%	54%	70%	69%	61%
Perc	86	83	36	33	59	82	38	47	82	37	16

Selection Indexes

\$A	\$A-L
\$192	\$323
59	66

Traits Observed: BWT, 400WT(x2), 600WT, SC, Scan(EMA, Rib, Rump, IMF), Genomics

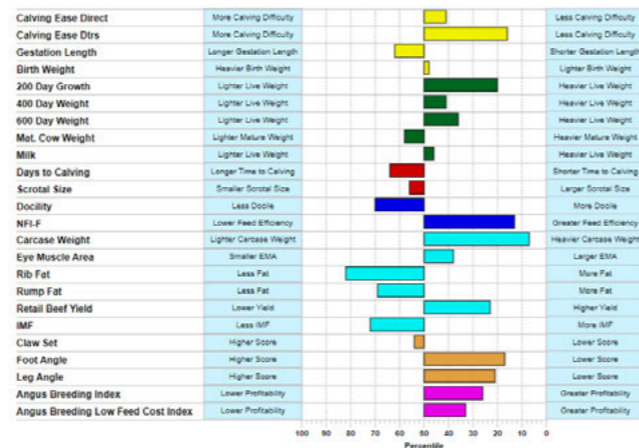
Notes: Flush brother to lot 10 with similar attributes. Dam Medlyn Revlon E17 bred Brooklana Emperor J64, sale topper, trait leader of cohorts 6 ASBP progeny for 400 & 600 day weight.

Purchaser: \$



BROOKLANA CAPITALIST S30

VIDEO LINK:



Lot 12

BROOKLANA CAPITALIST S30 PV

AMQ21S30

DOB: 10/10/2021

Registration Status: HBR

Mating Type: Natural

Genetic Status: AMFU,CAFU,DDFU,NHFU

CONNEALY CAPITALIST 028 #
LD CAPITALIST 316 PV
LD DIXIE ERICA 2053 #
ASCOT HALLMARK H147 PV
MILLAH MURRAH FLOWER N91 SV
MILLAH MURRAH FLOWER G56 PV

S CHISUM 6175 PV
S CHISUM 255 SV
S BLOSSOM 0278 #
AMQQ3 BROOKLANA MM PRUE Q3 PV
COONAMBLE HECTOR H249 SV
MILLAH MURRAH PRUE M4 SV
MILLAH MURRAH PRUE F141 PV

Sire: AMQQ25 BROOKLANA CAPITALIST Q25 PV

Dam: AMQQ3 BROOKLANA MM PRUE Q3 PV

Mid August 2023 TransTasman Angus Cattle Evaluation

TACE	CE Dir	CE Dtrs	GL	BW	200	400	600	MCW	Milk	SS	DC
EBV	+3.8	+6.2	-4.0	+4.0	+57	+92	+122	+94	+17	+2.0	-4.0
ACC	55%	44%	67%	71%	71%	69%	71%	66%	59%	69%	37%
Perc	41	17	62	48	21	44	38	60	47	52	69

TACE	CWT	EMA	Rib	Rump	RBY	IMF	NFI-F	Doc	Claw	Angle	Leg
EBV	+85	+7.2	-1.6	-1.3	+0.9	+1.4	-0.15	+16	+0.86	+0.82	+0.96
ACC	59%	58%	60%	60%	54%	63%	50%	42%	64%	64%	59%
Perc	8	37	82	68	23	69	13	70	53	17	26

Selection Indexes

\$A	\$A-L
\$220	\$363
27	35

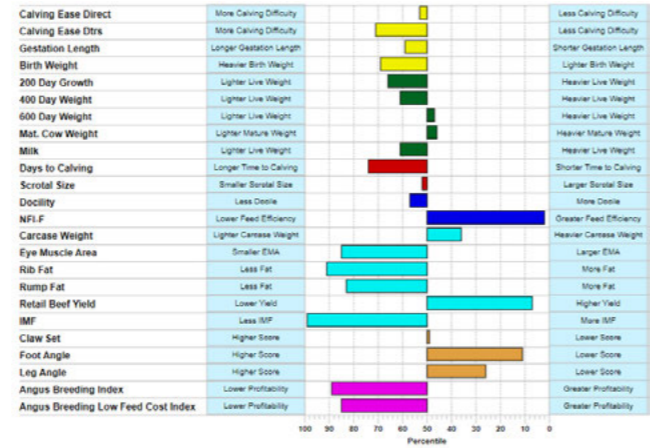
Traits Observed: BWT, 400WT, 600WT, SC, Scan(EMA, Rib, Rump, IMF), Genomics

Notes: Another son from our outstanding Millah Murrah Prue M4 x Chisum daughter Q3, a natural born calf to a Capitalist son, out of a Millah Murrah Flower dam. Millah Murrah to the fore here. Coupled to handy EBVs and great phenotype could be your path to world leading genetics. Prue, Flower, Chisum, Capitalist genetics - they are all in this package.

Purchaser: \$



BROOKLANA CAPITALIST S28 VIDEO LINK:



Lot 13 BROOKLANA CAPITALIST S28^{PV} AMQ21S28

DOB: 03/10/2021 Registration Status: HBR Mating Type: Natural Genetic Status: AMFU,CAFU,DDFU,NHFU

CONNEALY CAPITALIST 028 #
LD CAPITALIST 316^{PV}
LD DIXIE ERICA 2053 #
Sire: AMQQ25 BROOKLANA CAPITALIST Q25^{PV}
ASCOT HALLMARK H147^{PV}
MILLAH MURRAH FLOWER N91^{SV}
MILLAH MURRAH FLOWER G56^{PV}

K C F BENNETT PERFORMER #
COONAMBLE HECTOR H249^{SV}
COONAMBLE E9^{PV}
Dam: AMQQ19 BROOKLANA PRUE Q19^{PV}
MILLAH MURRAH EVIDENT H105^{SV}
MILLAH MURRAH PRUE K79^{SV}
MILLAH MURRAH PRUE G89^{PV}

Mid August 2023 TransTasman Angus Cattle Evaluation

TACE	CE Dir	CE Dtrs	GL	BW	200	400	600	MCW	Milk	SS	DC
EBV	+2.6	+0.7	-4.2	+5.0	+47	+87	+118	+102	+15	+2.0	-3.8
ACC	55%	46%	68%	71%	70%	69%	72%	66%	60%	72%	38%
Perc	52	72	59	71	65	60	47	46	66	52	74

TACE	CWT	EMA	Rib	Rump	RBY	IMF	NFI-F	Doc	Claw	Angle	Leg
EBV	+71	+3.1	-2.3	-2.4	+1.3	-0.8	-0.43	+18	+0.82	+0.78	+0.96
ACC	59%	59%	60%	61%	54%	63%	51%	44%	61%	61%	57%
Perc	35	85	91	83	9	99	3	57	45	11	26

Selection Indexes

\$A	\$A-L
\$151	\$285
89	85

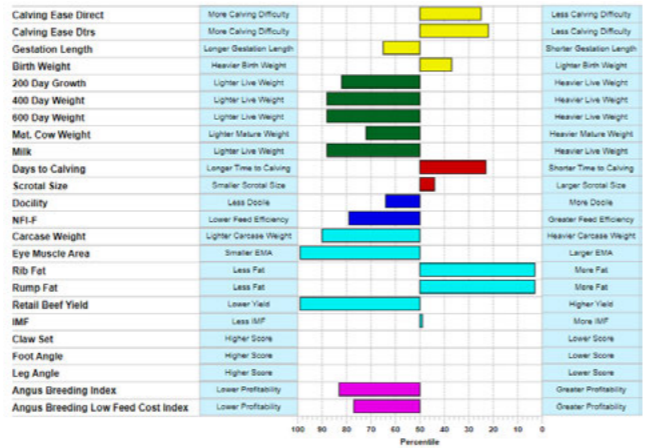
Traits Observed: BWT, 400WT, 600WT(x2), SC, Scan(EMA, Rib, Rump, IMF), Genomics

Notes: Millah Murrah Prue family coupled to Coonamble Hector on the dam side, Millah Murrah Flower family coupled to Ascot Hallmark and LD Capitalist on the sire side. Another limited opportunity to access the industry leading Millah Murrah breeding. Calving ease featured, with moderate framed females, high feed efficiency. A potential herd builder.

Purchaser: \$



BROOKLANA CAPITALIST A S18A VIDEO LINK:



Lot 14 BROOKLANA CAPITALIST A S18A # AMQ21S18A

DOB: 22/08/2021 Registration Status: HBR Mating Type: Natural Genetic Status: AMFU,CAFU,DDFU,NHFU

CONNEALY CAPITALIST 028 #
LD CAPITALIST 316^{PV}
LD DIXIE ERICA 2053 #
Sire: AMQQ48 BROOKLANA LD CAPITALIST Q48^{SV}
MYTTY IN FOCUS #
BROOKLANA GYPSY J19 #
MEDLYN GIPSY F120 #

TE MANIA INFINITY 04 379 AB #
BROOKLANA INFINITY L39^{SV}
BROOKLANA VENUS H11 #
Dam: AMQQ134 BROOKLANA TIFFANY Q134^{SV}
BEN NEVIS ABEL A12^{SV}
MEDLYN TIFFANY E46 #
MEDLYN TIFFANY B06 B6 #

Mid August 2023 TransTasman Angus Cattle Evaluation

TACE	CE Dir	CE Dtrs	GL	BW	200	400	600	MCW	Milk	SS	DC
EBV	+5.8	+5.6	-3.8	+3.5	+42	+74	+95	+86	+12	+2.2	-5.7
ACC	50%	42%	65%	70%	65%	67%	71%	64%	52%	70%	36%
Perc	24	23	65	37	82	89	88	73	87	44	23

TACE	CWT	EMA	Rib	Rump	RBY	IMF	NFI-F	Doc	Claw	Angle	Leg
EBV	+50	-1.5	+3.3	+4.1	-1.1	+2.1	+0.43	+17	-	-	-
ACC	57%	52%	55%	55%	50%	57%	46%	36%	-	-	-
Perc	90	99	4	3	99	49	79	64	-	-	-

Selection Indexes

\$A	\$A-L
\$162	\$303
84	78

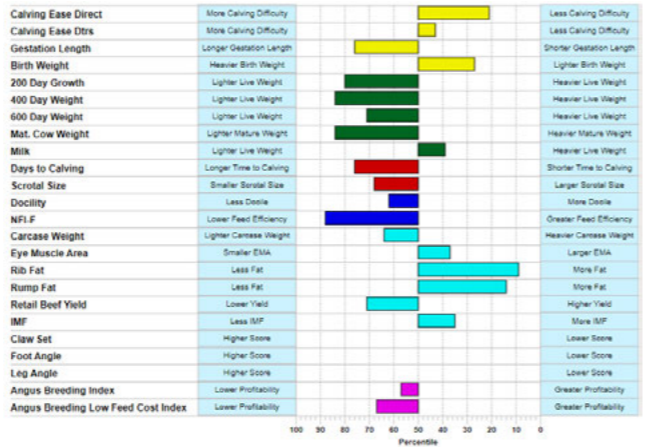
Traits Observed: BWT, 400WT, 600WT(x2), SC, Scan(EMA, Rib, Rump, IMF)

Notes: Scanned 7.6% IMF, top of the offering, a real thumper of a bull. Mytty In Focus, Berkley, Infinity, all in his pedigree, sired by Capitalist. Another heifer bull opportunity, genetics suggest docility a feature.

Purchaser: \$



BROOKLANA CAPITALIST A S22A VIDEO LINK:



Lot 15 BROOKLANA CAPITALIST A S22A # AMQ21S22A

DOB: 05/10/2021 Registration Status: HBR Mating Type: Natural Genetic Status: AMFU,CAFU,DDFU,NHFU

CONNEALY CAPITALIST 028 #
LD CAPITALIST 316^{PV}
LD DIXIE ERICA 2053 #
Sire: AMQQ48 BROOKLANA LD CAPITALIST Q48^{SV}
MYTTY IN FOCUS #
BROOKLANA GYPSY J19 #
MEDLYN GIPSY F120 #

TE MANIA EMPEROR E343^{PV}
BROOKLANA EMPEROR L29^{PV}
BROOKLANA DREAM H24^{PV}
Dam: AMQQ91 BROOKLANA CHAMPAGNE Q91^{SV}
TE MANIA INFINITY 04 379 AB #
BROOKLANA CHAMPAGNE L26 #
BROOKLANA CHAMPAGNE H66 #

Mid August 2023 TransTasman Angus Cattle Evaluation

TACE	CE Dir	CE Dtrs	GL	BW	200	400	600	MCW	Milk	SS	DC
EBV	+6.3	+3.5	-3.1	+3.0	+43	+77	+107	+76	+18	+1.6	-3.6
ACC	51%	43%	62%	70%	66%	68%	71%	64%	53%	70%	37%
Perc	20	44	76	27	81	84	72	85	38	68	78

TACE	CWT	EMA	Rib	Rump	RBY	IMF	NFI-F	Doc	Claw	Angle	Leg
EBV	+61	+7.2	+2.2	+2.0	+0.1	+2.6	+0.55	+17	-	-	-
ACC	58%	53%	55%	55%	50%	58%	48%	38%	-	-	-
Perc	64	37	10	14	71	35	88	62	-	-	-

Selection Indexes

\$A	\$A-L
\$194	\$321
57	68

Traits Observed: BWT, 400WT, 600WT(x2), SC, Scan(EMA, Rib, Rump, IMF)

Notes: Angus breed maternal royalty, Dream, Champagne, Mytty In Focus, blended with Emperor, Infinity and of course Capitalist on the male front. Above average IMF EBV. Solid breeding, predominantly calving ease EBVs. Won't disappoint.

Purchaser: \$

TransTasman Angus Cattle Evaluation - Mid August 2023 Reference Tables



BREED AVERAGE EBVs																								
Brd Avg	Calving Ease		Birth		Growth				Fertility			Carcass			Other			Structure			Selection Indexes			
	CEDir	CEDtrs	GL	BW	200	400	600	MCW	Milk	SS	DTC	CWT	EMA	RIB	P8	RBY	IMF	NFI-F	DOC	Claw	Angle	Leg	\$A	\$A-L
	+2.2	+2.6	-4.8	+4.0	+50	+90	+117	+100	+17	+2.1	-4.7	+66	+6.3	+0.0	-0.3	+0.5	+2.2	+0.19	+20	+0.84	+0.97	+1.03	+197	+339

* Breed average represents the average EBV of all 2021 drop Australian Angus and Angus-influenced seedstock animals analysed in the Mid August 2023 TransTasman Angus Cattle Evaluation .

PERCENTILE BANDS TABLE																										
% Band	Calving Ease		Birth		Growth				Fertility			Carcass			Other			Structure			Selection Indexes					
	CEDir	CEDtrs	GL	BW	200	400	600	MCW	Milk	SS	DTC	CWT	EMA	RIB	P8	RBY	IMF	NFI-F	DOC	Claw	Angle	Leg	\$A	\$A-L		
1%	+10.9	+9.9	-10.7	-0.4	+70	+123	+162	+160	+28	+4.8	-8.0	+99	+14.6	+4.3	+5.1	+2.0	+5.9	-0.54	+43	+0.42	+0.60	+0.74	+273	+449		
5%	+9.0	+8.2	-8.8	+1.0	+64	+112	+148	+141	+25	+3.9	-7.1	+88	+11.9	+2.9	+3.4	+1.5	+4.6	-0.32	+36	+0.54	+0.70	+0.84	+253	+419		
10%	+7.9	+7.2	-7.9	+1.7	+60	+107	+140	+131	+23	+3.5	-6.5	+83	+10.6	+2.2	+2.5	+1.3	+4.0	-0.20	+32	+0.60	+0.76	+0.88	+241	+403		
15%	+7.0	+6.5	-7.2	+2.2	+58	+104	+136	+124	+22	+3.2	-6.2	+79	+9.7	+1.7	+1.9	+1.1	+3.6	-0.13	+29	+0.66	+0.80	+0.90	+234	+392		
20%	+6.3	+5.9	-6.8	+2.6	+57	+101	+132	+119	+21	+3.0	-5.9	+77	+9.0	+1.4	+1.5	+1.0	+3.3	-0.07	+27	+0.68	+0.84	+0.92	+228	+383		
25%	+5.7	+5.3	-6.3	+2.9	+55	+99	+129	+115	+20	+2.8	-5.6	+75	+8.4	+1.1	+1.1	+0.9	+3.1	-0.02	+25	+0.72	+0.86	+0.94	+222	+376		
30%	+5.1	+4.8	-6.0	+3.1	+54	+97	+126	+112	+19	+2.6	-5.4	+73	+7.9	+0.8	+0.8	+0.8	+2.9	+0.03	+24	+0.74	+0.88	+0.96	+218	+369		
35%	+4.5	+4.4	-5.7	+3.4	+53	+95	+124	+109	+19	+2.5	-5.2	+71	+7.4	+0.6	+0.5	+0.7	+2.6	+0.07	+23	+0.76	+0.90	+0.98	+213	+363		
40%	+4.0	+3.9	-5.4	+3.6	+52	+93	+121	+106	+18	+2.3	-5.1	+69	+7.0	+0.4	+0.2	+0.6	+2.5	+0.10	+21	+0.82	+0.92	+1.00	+209	+357		
45%	+3.4	+3.4	-5.1	+3.8	+51	+92	+119	+103	+18	+2.2	-4.9	+68	+6.6	+0.2	+0.0	+0.6	+2.3	+0.14	+20	+0.82	+0.94	+1.02	+204	+350		
50%	+2.8	+3.0	-4.7	+4.0	+50	+90	+117	+100	+17	+2.1	-4.7	+66	+6.2	-0.1	-0.3	+0.5	+2.1	+0.18	+19	+0.84	+0.96	+1.02	+200	+344		
55%	+2.2	+2.5	-4.5	+4.3	+49	+88	+115	+97	+16	+2.0	-4.5	+64	+5.8	-0.3	-0.6	+0.4	+1.9	+0.22	+19	+0.86	+0.98	+1.04	+195	+338		
60%	+1.6	+2.0	-4.2	+4.5	+48	+87	+112	+94	+16	+1.8	-4.4	+63	+5.4	-0.5	-0.9	+0.3	+1.8	+0.25	+18	+0.88	+1.00	+1.06	+191	+331		
65%	+1.0	+1.5	-3.8	+4.7	+47	+85	+110	+91	+15	+1.7	-4.2	+61	+5.0	-0.7	-1.1	+0.3	+1.6	+0.29	+17	+0.90	+1.02	+1.08	+186	+324		
70%	+0.2	+0.9	-3.5	+4.9	+46	+83	+107	+88	+15	+1.6	-4.0	+59	+4.6	-0.9	-1.4	+0.2	+1.4	+0.34	+16	+0.94	+1.04	+1.08	+181	+316		
75%	-0.6	+0.3	-3.2	+5.2	+44	+81	+105	+84	+14	+1.4	-3.8	+57	+4.2	-1.2	-1.7	+0.1	+1.2	+0.38	+15	+0.96	+1.08	+1.10	+175	+308		
80%	-1.5	-0.4	-2.8	+5.5	+43	+79	+101	+80	+13	+1.3	-3.5	+55	+3.7	-1.4	-2.1	+0.0	+1.0	+0.44	+14	+1.00	+1.10	+1.12	+167	+297		
85%	-2.7	-1.4	-2.3	+5.9	+41	+76	+98	+75	+12	+1.1	-3.2	+53	+3.1	-1.8	-2.5	-0.2	+0.8	+0.50	+12	+1.04	+1.14	+1.16	+159	+285		
90%	-4.3	-2.5	-1.6	+6.3	+39	+73	+93	+69	+11	+0.8	-2.8	+49	+2.3	-2.2	-3.1	-0.3	+0.5	+0.58	+10	+1.08	+1.18	+1.18	+147	+267		
95%	-6.9	-4.4	-0.7	+7.0	+36	+68	+85	+60	+9	+0.4	-2.1	+44	+1.2	-2.8	-3.9	-0.6	+0.0	+0.71	+7	+1.16	+1.26	+1.24	+129	+239		
99%	-12.6	-8.5	+1.4	+8.5	+28	+56	+70	+40	+6	-0.4	-0.3	+34	-1.2	-4.2	-5.7	-1.1	-0.8	+0.96	+0	+1.30	+1.40	+1.32	+95	+186		

* The percentile bands represent the distribution of EBVs across the 2021 drop Australian Angus and Angus-influenced seedstock animals analysed in the Mid August 2023 TransTasman Angus Cattle Evaluation .



How to register as an AuctionsPlus user/buyer

- To sign up to AuctionsPlus, fill in your details and create a security PIN.
- Verify your email and phone number.
- Follow the steps to verify your ID.
- Enter your PIC number, ABN and business details if relevant.
- Carefully read and accept our user rules and responsibilities.
- Complete the user quiz.
- Submit your request to our team.

TransTasman Angus Cattle Evaluation - Mid August 2023 Reference Tables



BREED AVERAGE EBVs										
Brd Avg	\$A	\$D	\$GN	\$GS	\$A-L	\$D-L	\$GN-L	\$GS-L	\$PRO	\$T
	+197	+163	+259	+181	+339	+293	+405	+380	+145	+181

* Breed average represents the average EBV of all 2021 drop Australian Angus and Angus-influenced seedstock animals analysed in the Mid August 2023 TransTasman Angus Cattle Evaluation .

PERCENTILE BANDS TABLE										
% Band	\$A	\$D	\$GN	\$GS	\$A-L	\$D-L	\$GN-L	\$GS-L	\$PRO	\$T
1%	+273	+230	+363	+261	+449	+391	+539	+512	+228	+235
5%	+253	+211	+335	+239	+419	+364	+503	+475	+205	+221
10%	+241	+201	+319	+227	+403	+350	+484	+455	+193	+213
15%	+234	+194	+309	+219	+392	+340	+470	+443	+185	+207
20%	+228	+189	+300	+212	+383	+332	+459	+432	+178	+203
25%	+222	+184	+293	+207	+376	+325	+450	+423	+172	+199
30%	+218	+180	+286	+202	+369	+319	+442	+415	+167	+195
35%	+213	+176	+280	+197	+363	+314	+434	+407	+162	+192
40%	+209	+173	+274	+192	+357	+308	+426	+400	+157	+189
45%	+204	+169	+268	+188	+350	+303	+418	+393	+153	+186
50%	+200	+165	+262	+183	+344	+297	+411	+386	+148	+183
55%	+195	+161	+256	+179	+338	+292	+403	+378	+143	+180
60%	+191	+157	+250	+174	+331	+286	+395	+371	+138	+176
65%	+186	+153	+244	+169	+324	+280	+386	+362	+133	+173
70%	+181	+149	+236	+164	+316	+273	+377	+353	+127	+169
75%	+175	+144	+228	+158	+308	+265	+366	+343	+121	+165
80%	+167	+138	+219	+151	+297	+256	+353	+332	+114	+160
85%	+159	+130	+208	+142	+285	+245	+337	+317	+105	+154
90%	+147	+121	+193	+131	+267	+230	+316	+297	+92	+145
95%	+129	+106	+171	+113	+239	+206	+283	+264	+73	+133
99%	+95	+77	+129	+81	+186	+160	+223	+200	+38	+110

* The percentile bands represent the distribution of EBVs across the 2021 drop Australian Angus and Angus-influenced seedstock animals analysed in the Mid August 2023 TransTasman Angus Cattle Evaluation .



Scan to sign up now



Scan to see detailed step by step instructions

www.auctionsplus.com.au

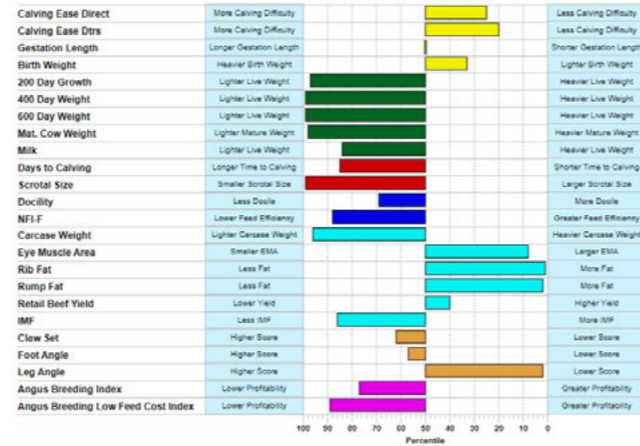


(02) 9262 4222



BROOKLANA CAPITALIST A S24A

VIDEO LINK:



Lot 16

BROOKLANA CAPITALIST A S24A^{PV}

AMQ21S24A

DOB: 05/10/2021

Registration Status: HBR

Mating Type: Natural

Genetic Status: AMFU,CAFU,DDFU,NHFU

CONNEALY CAPITALIST 028 #
LD CAPITALIST 316^{PV}
LD DIXIE ERICA 2053 #
Sire: AMQQ48 BROOKLANA LD CAPITALIST Q48^{SV}
MYTTY IN FOCUS #
BROOKLANA GYPSY J19 #
MEDLYN GIPSY F120 #

TE MANIA EMPEROR E343^{PV}
BROOKLANA EMPEROR L29^{PV}
BROOKLANA DREAM H24^{PV}
Dam: AMQQ162 BROOKLANA QUEEN Q162^{SV}
MEDLYN CYRUS C84^{SV}
MEDLYN QUEEN F36 #
MEDLYN QUEEN X70 #

Mid August 2023 TransTasman Angus Cattle Evaluation

TACE	CE Dir	CE Dtrs	GL	BW	200	400	600	MCW	Milk	SS	DC
EBV	+5.9	+5.9	-4.6	+3.3	+34	+57	+74	+54	+13	-1.4	-3.1
ACC	54%	45%	68%	70%	69%	67%	71%	65%	58%	70%	36%
Perc	23	20	52	33	97	99	99	97	82	99	87

TACE	CWT	EMA	Rib	Rump	RBY	IMF	NFI-F	Doc	Claw	Angle	Leg
EBV	+44	+11.1	+5.0	+4.9	+0.6	+0.8	+0.54	+16	+0.90	+1.00	+0.78
ACC	58%	57%	59%	59%	52%	62%	50%	35%	65%	65%	60%
Perc	96	8	1	2	40	84	88	70	62	57	2

Selection Indexes

\$A	\$A-L
\$172	\$275
77	89

Traits Observed: BWT, 400WT, 600WT(x2), SC, Scan(EMA, Rib, Rump, IMF), Genomics

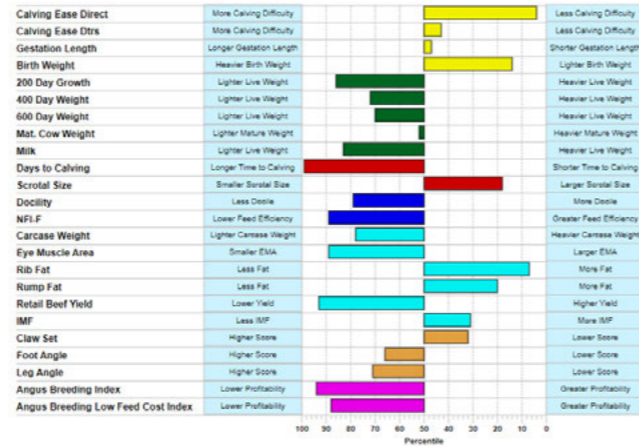
Notes: Could be at the economical end of the price point, with stars in the pedigree such as Emperor, Mytty In Focus and the Dream cow family. Worthy of consideration.

Purchaser: \$



BROOKLANA M REALITY S33

VIDEO LINK:



Lot 17

BROOKLANA M REALITY S33^{SV}

AMQ21S33

DOB: 16/10/2021

Registration Status: APR

Mating Type: Natural

Genetic Status: AM6%,CA6%,DD6%,NH6%

MATAURI REALITY 839 #
BROOKLANA M REALITY K57^{SV}
MEDLYN REGAL F39 #
Sire: AMQP14 BROOKLANA REALITY P14^{PV}
AYRVALE BARTEL E7^{PV}
BROOKLANA REGAL J4^{SV}
MEDLYN REGAL F39 #

UNKNOWN

Dam: AMQN51 BROOKLANA N51 #

UNKNOWN

L2 #

UNKNOWN

Mid August 2023 TransTasman Angus Cattle Evaluation

TACE	CE Dir	CE Dtrs	GL	BW	200	400	600	MCW	Milk	SS	DC
EBV	+9.5	+3.9	-4.8	+2.1	+41	+83	+108	+99	+13	+3.0	-1.0
ACC	47%	36%	62%	63%	66%	63%	65%	61%	51%	64%	29%
Perc	4	40	49	14	85	71	70	52	82	18	98

TACE	CWT	EMA	Rib	Rump	RBY	IMF	NFI-F	Doc	Claw	Angle	Leg
EBV	+56	+2.7	+2.7	+1.6	-0.5	+2.8	+0.57	+14	+0.76	+1.06	+1.10
ACC	53%	52%	54%	55%	47%	58%	45%	26%	59%	59%	56%
Perc	78	88	6	18	93	31	90	79	32	71	71

Selection Indexes

\$A	\$A-L
\$139	\$280
93	87

Traits Observed: 400WT, 600WT, SC, Scan(EMA, Rib, Rump, IMF), Genomics

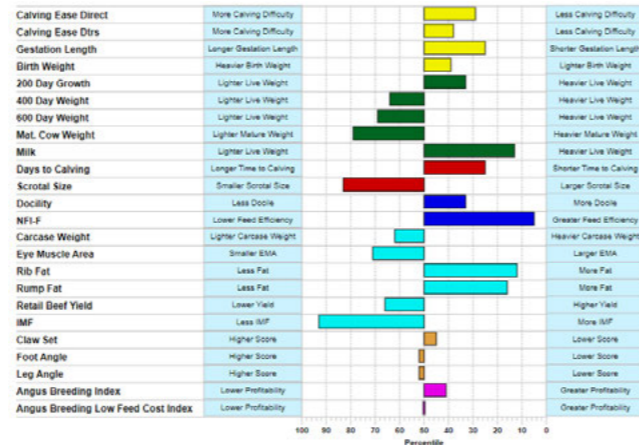
Notes: APR status, records show a double up of genes on the sire side with Matauri Reality and Ayrvale Bartel E7 building the package. On the dams side Farfield TM Modest features. An outstanding calf ensured he would become a sire not a steer.

Purchaser: \$



BROOKLANA CHISUM S77

VIDEO LINK:



Lot 18

BROOKLANA CHISUM S77^{SV}

AMQ21S77

DOB: 18/11/2021

Registration Status: HBR

Mating Type: AI

Genetic Status: AMFU,CAFU,DDFU,NHFU

S ALLIANCE 3313 #
S CHISUM 6175^{PV}
S GLORIA 464 #
Sire: USA17298481 S CHISUM 255^{SV}
SHIPWHEEL CHINOOK #
S BLOSSOM 0278 #
S BLOSSOM 8378 #

TE MANIA BERKLEY B1^{PV}
TE MANIA EMPEROR E343^{PV}
TE MANIA LOWAN Z74^{PV}
Dam: AMQJ63 BROOKLANA PRIDE J63 #
S A V NET WORTH 4200 #
MEDLYN PRIDE E29 #
MEDLYN PRIDE V7 #

Mid August 2023 TransTasman Angus Cattle Evaluation

TACE	CE Dir	CE Dtrs	GL	BW	200	400	600	MCW	Milk	SS	DC
EBV	+4.9	+4.1	-6.3	+3.6	+53	+85	+107	+81	+22	+1.1	-5.5
ACC	61%	51%	74%	74%	73%	72%	74%	69%	65%	74%	43%
Perc	32	38	25	39	34	65	70	79	15	84	28

TACE	CWT	EMA	Rib	Rump	RBY	IMF	NFI-F	Doc	Claw	Angle	Leg
EBV	+62	+4.5	+2.0	+1.7	+0.2	+0.3	-0.35	+23	+0.82	+0.96	+1.04
ACC	64%	63%	64%	64%	59%	66%	53%	54%	68%	68%	61%
Perc	63	71	12	17	66	92	4	33	45	47	52

Selection Indexes

\$A	\$A-L
\$207	\$342
43	52

Traits Observed: BWT, 400WT, 600WT(x2), SC, Scan(EMA, Rib, Rump, IMF), Genomics

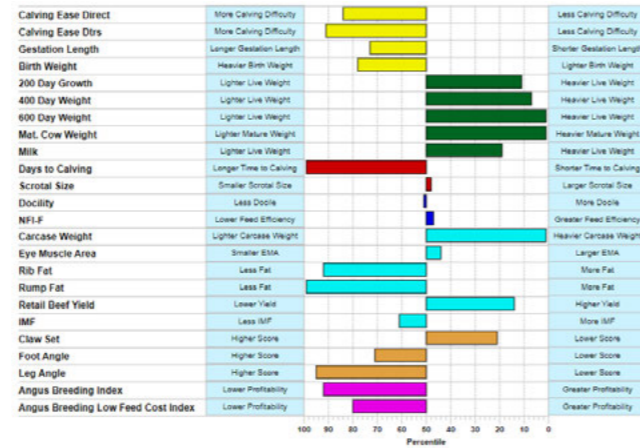
Notes: S 255 Chisum sires another son in our catalogue. The dam is one of our favourite cows, she is a big girl, always in top condition, an Emperor daughter. Great combination with Chisum. One of our favourites.

Purchaser: \$



BROOKLANA REALITY S51

VIDEO LINK:



Lot 19

BROOKLANA REALITY S51^{SV}

AMQ21S51

DOB: 19/11/2021

Registration Status: HBR

Mating Type: Natural

Genetic Status: AMFU,CAFU,DDFU,NHFU

MATAURI REALITY 839 #
 BROOKLANA M REALITY K57^{SV}
 MEDLYN REGAL F39 #
Sire: AMQP14 BROOKLANA REALITY P14^{PV}
 AYRVALE BARTEL E7^{PV}
 BROOKLANA REGAL J4^{SV}
 MEDLYN REGAL F39 #

PAPA EQUATOR 2928 #
 ARDROSSAN EQUATOR A241^{PV}
 ARDROSSAN PRINCESS W38^{PV}
Dam: AMQF27 PIPINPINGAH CHAMPAGNE X130 F27^{SV}
 ATAHUA LEGACY 26-90 (NZ) #
 VERMONT CHAMPAGNE X130 #
 MERRIBROOK CHAMPAGNE R49+96 #

Mid August 2023 TransTasman Angus Cattle Evaluation

TACE	CE Dir	CE Dtrs	GL	BW	200	400	600	MCW	Milk	SS	DC
EBV	-2.4	-2.8	-3.4	+5.4	+60	+110	+169	+161	+21	+2.1	+0.4
ACC	55%	47%	68%	71%	71%	69%	72%	67%	60%	71%	41%
Perc	84	91	72	78	12	7	1	1	17	48	99

TACE	CWT	EMA	Rib	Rump	RBY	IMF	NFI-F	Doc	Claw	Angle	Leg
EBV	+99	+6.7	-2.4	-5.9	+1.1	+1.8	+0.17	+19	+0.70	+1.06	+1.24
ACC	61%	60%	62%	62%	56%	65%	54%	42%	61%	61%	60%
Perc	1	43	92	99	14	58	49	50	21	71	95

Selection Indexes

\$A	\$A-L
\$144	\$299
92	80

Traits Observed: BWT, 400WT, 600WT(x2), SC, Scan(EMA, Rib, Rump, IMF), Genomics

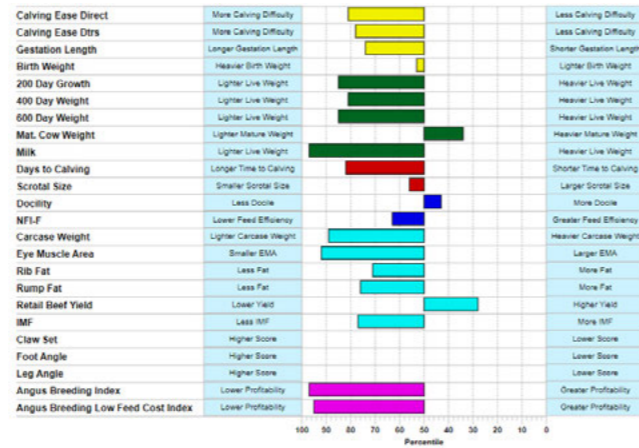
Notes: Growth galore, mature cow prospect, dam F27 would be our biggest framed cow, 600 day EBV top 4%, 2nd heaviest at last weigh in. Reality on sire side, Champagne cow family a quality blend.

Purchaser: \$



BROOKLANA INFINITY S59

VIDEO LINK:



Lot 20

BROOKLANA INFINITY S59[#]

AMQ21S59

DOB: 25/12/2021

Registration Status: HBR

Mating Type: AI

Genetic Status: AMFU,CAFU,DDFU,NHFU

TE MANIA UNLIMITED U3271 #
 TE MANIA INFINITY 04 379 AB #
 TE MANIA 95102 #
Sire: AMQN23 BROOKLANA INFINITY N23^{PV}
 TE MANIA BERKLEY B1^{PV}
 BROOKLANA CHAMPAGNE H52^{PV}
 MEDLYN FLO-JO C46^{SV}

TE MANIA EMPEROR E343^{PV}
 BROOKLANA HI TOWER H64^{PV}
 PIPINPINGAH CHAMPAGNE X130 F27^{SV}
Dam: AMQM57 BROOKLANA ROXY M057 M57 #
 PIPINPINGAH TRAVELLER F5^{SV}
 BROOKLANA ROXY H26 #
 MEDLYN ROXY E11 #

Mid August 2023 TransTasman Angus Cattle Evaluation

TACE	CE Dir	CE Dtrs	GL	BW	200	400	600	MCW	Milk	SS	DC
EBV	-1.5	-0.1	-3.2	+4.3	+42	+80	+100	+111	+8	+1.5	-3.2
ACC	49%	42%	60%	66%	62%	63%	65%	59%	49%	63%	36%
Perc	80	78	74	55	84	79	83	31	97	71	85

TACE	CWT	EMA	Rib	Rump	RBY	IMF	NFI-F	Doc	Claw	Angle	Leg
EBV	+52	+2.5	-1.1	-1.8	+0.9	+1.2	+0.27	+21	-	-	-
ACC	54%	50%	53%	52%	47%	54%	45%	36%	-	-	-
Perc	86	89	73	76	23	75	62	42	-	-	-

Selection Indexes

\$A	\$A-L
\$125	\$254
96	93

Traits Observed: BWT, 400WT, 600WT(x2), SC, Scan(EMA, Rib, Rump, IMF)

Notes: Te Mania genetics, both sides merge from Infinity and Emperor. F27 dam of previous lot also in the mix here.

Purchaser: \$



BROOKLANA INFINITY S55

VIDEO LINK:



Lot 21

BROOKLANA INFINITY S55^{SV}

AMQ21S55

DOB: 29/11/2021

Registration Status: HBR

Mating Type: Natural

Genetic Status: AMFU,CAFU,DDFU,NHFU

TE MANIA UNLIMITED U3271 #
 TE MANIA INFINITY 04 379 AB #
 TE MANIA 95102 #
Sire: AMQN23 BROOKLANA INFINITY N23^{PV}
 TE MANIA BERKLEY B1^{PV}
 BROOKLANA CHAMPAGNE H52^{PV}
 MEDLYN FLO-JO C46^{SV}

MEDLYN ABBA A35^{SV}
 MEDLYN CHILE C25 #
 MEDLYN PENNY Z73 #
Dam: AMQL73 BROOKLANA CHAMPAGNE L73 #
 BOOROOMOOKA WARWICK W245 #
 VERMONT CHAMPAGNE D072 #
 MERRIBROOK CHAMPAGNE R49+96 #

Mid August 2023 TransTasman Angus Cattle Evaluation

TACE	CE Dir	CE Dtrs	GL	BW	200	400	600	MCW	Milk	SS	DC
EBV	-4.2	-0.9	-1.9	+4.2	+43	+87	+104	+121	+17	+2.4	-2.5
ACC	54%	45%	68%	71%	69%	68%	71%	65%	57%	70%	38%
Perc	90	83	88	53	80	59	77	19	49	36	93

TACE	CWT	EMA	Rib	Rump	RBY	IMF	NFI-F	Doc	Claw	Angle	Leg
EBV	+57	+4.3	-2.2	-3.0	+1.0	+1.8	+0.28	+21	+1.00	+1.10	+1.12
ACC	58%	56%	58%	58%	51%	61%	48%	33%	60%	60%	57%
Perc	77	73	90	89	18	58	63	42	79	78	76

Selection Indexes

\$A	\$A-L
\$117	\$246
98	95

Traits Observed: BWT, 400WT, 600WT(x2), SC, Scan(EMA, Rib, Rump, IMF), Genomics

Notes: Champagne cow family yet again, with Infinity and Berkley on the sires side. Great feed efficiency, Retail Beef Yield, Eye Muscle area, great temperament.

Purchaser: \$



BROOKLANA EMPEROR S80

VIDEO LINK:



Lot 22

BROOKLANA EMPEROR S80

AMQ21S80

DOB: 30/12/2021

Registration Status: HBR

Mating Type: Natural

Genetic Status: AMFU,CAFU,DDFU,NHFU

TE MANIA EMPEROR E343 PV
 BROOKLANA EMPEROR L29 PV
 BROOKLANA DREAM H24 PV
 Sire: AMQQ17 BROOKLANA EMPEROR Q17 PV
 COONAMBLE HECTOR H249 SV
 MILLAH MURRAH PRUE M4 SV
 MILLAH MURRAH PRUE F141 PV

BT RIGHT TIME 24J #
 BROOKLANA DREAM H29 PV
 VERMONT DREAM B251 PV
 Dam: AMQL16 BROOKLANA FLO-JO L16 #
 TE MANIA EMPEROR E343 PV
 BROOKLANA FLO-JO H80 #
 MEDLYN FLO-JO C46 SV

Mid August 2023 TransTasman Angus Cattle Evaluation

TACE	CE Dir	CE Dtrs	GL	BW	200	400	600	MCW	Milk	SS	DC
EBV	+3.3	+3.8	-7.3	+3.5	+44	+82	+103	+91	+18	+2.4	-5.1
ACC	49%	40%	58%	68%	63%	62%	69%	62%	50%	68%	34%
Perc	46	41	15	37	77	73	77	65	41	36	38

TACE	CWT	EMA	Rib	Rump	RBY	IMF	NFI-F	Doc	Claw	Angle	Leg
EBV	+54	+8.7	-0.2	-1.2	+0.9	+1.4	-0.13	+22	-	-	-
ACC	56%	52%	54%	54%	49%	56%	47%	37%	-	-	-
Perc	83	22	53	66	23	69	15	37	-	-	-

Selection Indexes

\$A	\$A-L
\$186	\$324
66	66

Traits Observed: BWT, 400WT(x2), 600WT, SC, Scan(EMA, Rib, Rump, IMF)

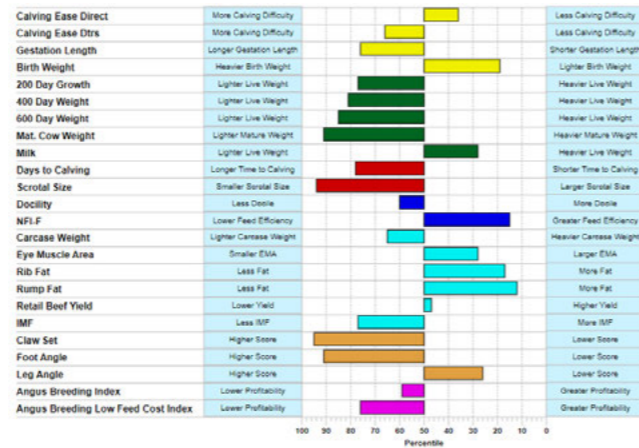
Notes: Sired by our Millah Murrah Prue M4 herd sire Q17, full of Dream cow family genetics, backed by BT Right Time 24J and Te Mania Emperor on both sides of the pedigree. A hassle free, short gestation length, high EMA, high Retail Beef Yield. Quiet young man, perfect for the commercial cow herd.

Purchaser: \$



BROOKLANA CAPITALIST A S20A

VIDEO LINK:



Lot 23

BROOKLANA CAPITALIST A S20A PV

AMQ21S20A

DOB: 20/09/2021

Registration Status: HBR

Mating Type: Natural

Genetic Status: AMFU,CAFU,DD3%,NH12%

CONNEALY CAPITALIST 028 #
 LD CAPITALIST 316 PV
 LD DIXIE ERICA 2053 #
 Sire: AMQQ48 BROOKLANA LD CAPITALIST Q48 SV
 MYTTY IN FOCUS #
 BROOKLANA GYPSY J19 #
 MEDLYN GYPSY F120 #

BT RIGHT TIME 24J #
 BROOKLANA DREAM H29 PV
 VERMONT DREAM B251 PV
 Dam: AMQQ143 BROOKLANA LOWAN Q143 SV
 L T 598 BANDO 9074 #
 BROOKLANA LOWAN H78 #
 VERMONT LOWAN E625 #

Mid August 2023 TransTasman Angus Cattle Evaluation

TACE	CE Dir	CE Dtrs	GL	BW	200	400	600	MCW	Milk	SS	DC
EBV	+4.2	+1.0	-3.0	+2.6	+44	+79	+98	+68	+20	+0.6	-3.7
ACC	54%	45%	70%	70%	69%	68%	71%	65%	58%	71%	38%
Perc	38	69	77	20	78	81	85	91	24	93	76

TACE	CWT	EMA	Rib	Rump	RBY	IMF	NFI-F	Doc	Claw	Angle	Leg
EBV	+61	+8.0	+1.6	+2.3	+0.5	+1.1	-0.12	+18	+1.16	+1.18	+0.96
ACC	58%	58%	59%	60%	53%	63%	51%	38%	65%	65%	60%
Perc	65	29	16	12	46	77	16	60	95	89	26

Selection Indexes

\$A	\$A-L
\$192	\$307
60	76

Traits Observed: BWT, 400WT, 600WT(x2), SC, Scan(EMA, Rib, Rump, IMF), Genomics

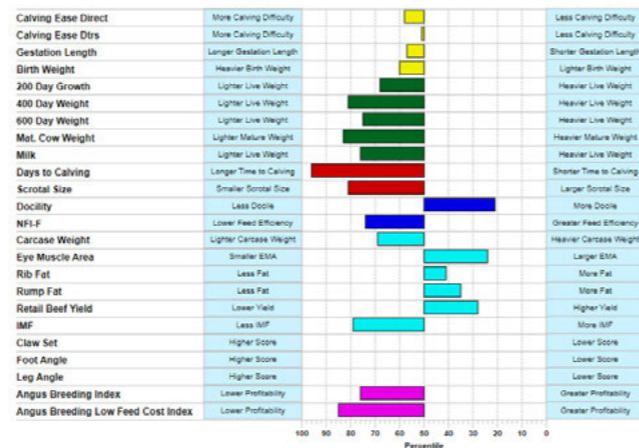
Notes: Capitalist/Mytty In Focus sired, from a renowned cow pedigree, scanned 7.2 for IMF. Calving Ease and Birth Weight EBVs above average with high Rib and Rump fats EBVs, scans confirm the data.

Purchaser: \$



BROOKLANA CHISUM S20

VIDEO LINK:



Lot 24

BROOKLANA CHISUM S20

AMQ21S20

DOB: 23/09/2021

Registration Status: APR

Mating Type: Natural

Genetic Status: AM3%,CA3%,DD9%,NH3%

S CHISUM 6175 PV
 S CHISUM 255 SV
 S BLOSSOM 0278 #
 Sire: AMQQ20 BROOKLANA CHISUM Q20 PV
 COONAMBLE HECTOR H249 SV
 MILLAH MURRAH PRUE M4 SV
 MILLAH MURRAH PRUE F141 PV

UNKNOWN
 Dam: AMQP78 BROOKLANA LD PEBBLES P78 #
 FARFIELD TM MODEST 773 #
 BROOKLANA PEBBLES J37 #
 MEDLYN PEBBLES F109 #

Mid August 2023 TransTasman Angus Cattle Evaluation

TACE	CE Dir	CE Dtrs	GL	BW	200	400	600	MCW	Milk	SS	DC
EBV	+1.8	+3.0	-4.3	+4.5	+46	+79	+105	+77	+14	+1.2	-2.0
ACC	47%	36%	62%	66%	64%	66%	70%	62%	50%	70%	29%
Perc	59	50	57	60	68	81	75	84	78	81	96

TACE	CWT	EMA	Rib	Rump	RBY	IMF	NFI-F	Doc	Claw	Angle	Leg
EBV	+60	+8.5	+0.3	+0.6	+0.7	+1.0	+0.38	+27	-	-	-
ACC	55%	49%	53%	53%	47%	54%	41%	30%	-	-	-
Perc	70	24	41	33	33	79	75	21	-	-	-

Selection Indexes

\$A	\$A-L
\$172	\$284
77	86

Traits Observed: BWT, 400WT, 600WT(x2), SC, Scan(EMA, Rib, Rump, IMF)

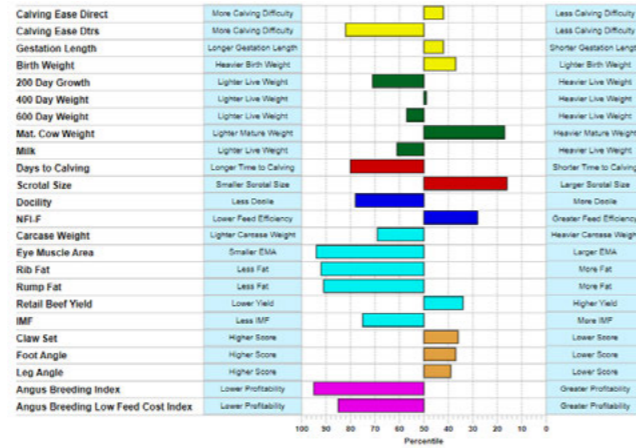
Notes: Millah Murrah Prue M4 x S Chisum 255, paternal grandson demonstrating excellent phenotype. A real eye catcher, selling as an APR so an opportunity for those wishing to access the top end of Millah Murrah genetics.

Purchaser: \$



BROOKLANA INFINITY S53

VIDEO LINK:



Lot 25

BROOKLANA INFINITY S53^{SV}

AMQ21S53

DOB: 26/11/2021

Registration Status: HBR

Mating Type: Natural

Genetic Status: AMFU,CAFU,DDFU,NHFU

TE MANIA UNLIMITED U3271 #
TE MANIA INFINITY 04 379 AB #
TE MANIA 95102 #
Sire: AMQN23 BROOKLANA INFINITY N23^{PV}
TE MANIA BERKLEY B1^{PV}
BROOKLANA CHAMPAGNE H52^{PV}
MEDLYN FLO-JO C46^{SV}

MEDLYN ABBA A35^{SV}
MEDLYN CHILE C25 #
MEDLYN PENNY Z73 #
Dam: AMQK67 BROOKLANA PRIDE K67 #
S A V NET WORTH 4200 #
MEDLYN PRIDE E29 #
MEDLYN PRIDE V7 #

Mid August 2023 TransTasman Angus Cattle Evaluation

TACE	CE Dir	CE Dtrs	GL	BW	200	400	600	MCW	Milk	SS	DC
EBV	+4.1	-0.5	-5.2	+3.5	+45	+91	+114	+125	+16	+3.1	-3.5
ACC	54%	45%	68%	71%	70%	68%	71%	65%	58%	70%	38%
Perc	39	81	42	37	71	49	57	15	62	16	80

TACE	CWT	EMA	Rib	Rump	RBY	IMF	NFI-F	Doc	Claw	Angle	Leg
EBV	+60	+1.6	-2.5	-3.3	+0.7	+1.2	+0.03	+14	+0.80	+0.94	+1.02
ACC	58%	56%	58%	58%	51%	61%	49%	33%	60%	60%	57%
Perc	70	94	93	92	33	75	30	78	40	42	45

Selection Indexes	
\$A	\$A-L
\$133	\$288
95	84

Traits Observed: BWT, 400WT, 600WT(x2), SC, Scan(EMA, Rib, Rump, IMF), Genomics

Notes: Genetics which can be described as 'old fashioned' with Infinity, Berkley from the sire, SAV Network from the dam. A top food converter with all growth EBVs above average, better over cows.

Purchaser: \$



BROOKLANA ENHANCE S74

VIDEO LINK:



Lot 26

BROOKLANA ENHANCE S74

AMQ21S74

DOB: 08/09/2021

Registration Status: HBR

Mating Type: Natural

Genetic Status: AMFU,CAFU,DDFU,NHFU

SYDGEN EXCEED 3223^{PV}
SYDGEN ENHANCE^{SV}
SYDGEN RITA 2618 #
Sire: AMQQ52 BROOKLANA ENHANCE Q52^{SV}
TE MANIA EMPEROR E343^{PV}
BROOKLANA CHAMPAGNE M38^{SV}
VERMONT CHAMPAGNE D086 #

TE MANIA EMPEROR E343^{PV}
BROOKLANA EMPEROR L29^{PV}
BROOKLANA DREAM H24^{PV}
Dam: AMQQ161 BROOKLANA Q161 #
MILLAH MURRAH KINGDOM K35^{PV}
BROOKLANA REVLON N216^{PV}
MEDLYN REVLON E17^{SV}

Mid August 2023 TransTasman Angus Cattle Evaluation

TACE	CE Dir	CE Dtrs	GL	BW	200	400	600	MCW	Milk	SS	DC
EBV	-3.8	-1.8	-4.0	+6.1	+49	+89	+120	+111	+10	+1.4	-3.9
ACC	50%	42%	59%	59%	60%	58%	58%	57%	50%	54%	33%
Perc	89	87	62	88	54	54	42	31	93	75	72

TACE	CWT	EMA	Rib	Rump	RBY	IMF	NFI-F	Doc	Claw	Angle	Leg
EBV	+58	+7.6	+0.2	-0.3	+0.5	+1.5	-0.24	+27	-	-	-
ACC	52%	51%	53%	53%	48%	55%	45%	38%	-	-	-
Perc	75	33	43	49	46	67	8	21	-	-	-

Selection Indexes	
\$A	\$A-L
\$164	\$293
83	82

Traits Observed: 600WT(x2), SC, Scan(EMA, Rib, Rump, IMF)

Notes: One of the friendliest of all, excellent genetics on every line of his breeding from Sydgen Enhance to Te Mania Emperor on both sides of his pedigree, to Millah Murrah Kingdom, with cow maker genes from Champagne D86 and Revlon E17. Very handy young prospect.

Purchaser: \$



BROOKLANA MAN HECTOR S4E

VIDEO LINK:



Lot 27

BROOKLANA MAN HECTOR S4E^{SV}

AMQ21S4E

DOB: 06/12/2021

Registration Status: APR

Mating Type: Natural

Genetic Status: AM2%,CA2%,DD2%,NH2%

TE MANIA EMPEROR E343^{PV}
BROOKLANA EMPEROR L29^{PV}
BROOKLANA DREAM H24^{PV}
Sire: AMQQ17 BROOKLANA EMPEROR Q17^{PV}
COONAMBLE HECTOR H249^{SV}
MILLAH MURRAH PRUE M4^{SV}
MILLAH MURRAH PRUE F141^{PV}

BT RIGHT TIME 24J #
BROOKLANA DREAM H29^{PV}
VERMONT DREAM B251^{PV}
Dam: AMQL013 BROOKLANA L013 #
PIPIPINGAH GT ULTRA F2^{SV}
BROOKLANA H40 #
UNKNOWN

Mid August 2023 TransTasman Angus Cattle Evaluation

TACE	CE Dir	CE Dtrs	GL	BW	200	400	600	MCW	Milk	SS	DC
EBV	+3.6	+1.0	-5.8	+3.9	+42	+80	+108	+84	+16	+2.5	-3.2
ACC	48%	37%	62%	65%	66%	63%	64%	61%	52%	59%	28%
Perc	43	69	33	46	82	79	70	75	59	33	85

TACE	CWT	EMA	Rib	Rump	RBY	IMF	NFI-F	Doc	Claw	Angle	Leg
EBV	+61	+7.0	+2.7	+2.8	+0.1	+1.8	+0.18	+21	-	-	-
ACC	53%	53%	55%	55%	47%	59%	45%	25%	-	-	-
Perc	66	39	6	8	71	58	50	44	-	-	-

Selection Indexes	
\$A	\$A-L
\$172	\$298
77	80

Traits Observed: BWT, 400WT(x2), 600WT, SC, Scan(EMA, Rib, Rump, IMF), Genomics

Notes: APR sire, verified to Millah Murrah Prue M4 x Brooklana Emperor Q17 sire, unregistered dam, sired by H29, Dream x 24J, ASBP trait leader. Awaiting DNA result, breeding on point, scan data doesn't disappoint, top commercial breeding prospect.

Purchaser: \$



BROOKLANA ENHANCE A S21A

VIDEO LINK:



Lot 28

BROOKLANA ENHANCE A S21A^{PV}

AMQ21S21A

DOB: 02/09/2021

Registration Status: HBR

Mating Type: Natural

Genetic Status: AMFU,CAFU,DDFU,NHFU

SYDGEN EXCEED 3223^{PV}
 SYDGEN ENHANCE^{SV}
 SYDGEN RITA 2618 #
 Sire: AMQQ52 BROOKLANA ENHANCE Q52^{SV}
 TE MANIA EMPEROR E343^{PV}
 BROOKLANA CHAMPAGNE M38^{SV}
 VERMONT CHAMPAGNE D086 #

TE MANIA EMPEROR E343^{PV}
 BROOKLANA EMPEROR L29^{PV}
 BROOKLANA DREAM H24^{PV}
 Dam: AMQQ89 BROOKLANA FLO-JO Q89^{PV}
 TE MANIA BERKLEY B1^{PV}
 BROOKLANA FLO-JO H44 #
 MEDLYN FLO-JO C46^{SV}

Mid August 2023 TransTasman Angus Cattle Evaluation

TACE	CE Dir	CE Dtrs	GL	BW	200	400	600	MCW	Milk	SS	DC
EBV	-3.9	+1.8	-6.3	+5.0	+52	+97	+134	+115	+12	+1.8	-3.5
ACC	55%	46%	69%	70%	70%	68%	71%	66%	59%	71%	36%
Perc	89	62	25	71	40	29	18	26	84	60	80

TACE	CWT	EMA	Rib	Rump	RBY	IMF	NFI-F	Doc	Claw	Angle	Leg
EBV	+71	+7.4	-2.4	-3.6	+0.6	+2.9	-0.22	+25	+0.72	+0.92	+1.02
ACC	59%	59%	60%	60%	53%	64%	51%	39%	63%	63%	60%
Perc	34	35	92	94	40	28	9	27	24	37	45

Selection Indexes

\$A	\$A-L
\$180	\$316
71	70

Traits Observed: BWT, 400WT, 600WT(x2), SC, Scan(EMA, Rib, Rump, IMF), Genomics

Notes: Heaviest bull at weighing, scanned 7.1% IMF, 116 EMA, sired by Sydgen Enhance son out of Champagne daughter, dam Emperor x Dream 24J genetics. This could be the buy of the sale, a real thumper with an outstanding pedigree, high feed conversion, excellent disposition.

Purchaser: \$



BROOKLANA INFINITY S60

VIDEO LINK:



Lot 29

BROOKLANA INFINITY S60[#]

AMQ21S60

DOB: 20/12/2021

Registration Status: HBR

Mating Type: Natural

Genetic Status: AMFU,CAFU,DDFU,NHFU

TE MANIA UNLIMITED U3271 #
 TE MANIA INFINITY 04 379 AB #
 TE MANIA 95102 #
 Sire: AMQN23 BROOKLANA INFINITY N23^{PV}
 TE MANIA BERKLEY B1^{PV}
 BROOKLANA CHAMPAGNE H52^{PV}
 MEDLYN FLO-JO C46^{SV}

MATAURI REALITY 839 #
 BROOKLANA M REALITY K57^{SV}
 MEDLYN REGAL F39 #
 Dam: AMQN21 BROOKLANA REGAL N21^{PV}
 AYRVALE BARTEL E7^{PV}
 BROOKLANA REGAL J4^{SV}
 MEDLYN REGAL F39 #

Mid August 2023 TransTasman Angus Cattle Evaluation

TACE	CE Dir	CE Dtrs	GL	BW	200	400	600	MCW	Milk	SS	DC
EBV	+0.5	-1.8	-3.1	+5.2	+58	+101	+136	+142	+10	+2.9	-3.8
ACC	53%	45%	61%	68%	65%	66%	69%	63%	53%	67%	39%
Perc	68	87	76	74	17	21	16	5	94	21	74

TACE	CWT	EMA	Rib	Rump	RBY	IMF	NFI-F	Doc	Claw	Angle	Leg
EBV	+74	+7.7	-2.1	-4.5	+1.4	+1.6	+0.23	+14	-	-	-
ACC	57%	55%	57%	57%	51%	59%	49%	39%	-	-	-
Perc	28	32	89	97	7	64	57	79	-	-	-

Selection Indexes

\$A	\$A-L
\$185	\$349
67	47

Traits Observed: BWT, 400WT(x2), 600WT, SC, Scan(EMA, Rib, Rump, IMF)

Notes: Expect well above average growth according to EBVs and breeding. Dam carries Matauri Reality and Ayrvale Bartel E7 genes, sire is close to 100% Te Mania with Infinity and Berkley prominent, impressive Retail Beef Yield EBV.

Purchaser: \$



BROOKLANA INFINITY S63

VIDEO LINK:



Lot 30

BROOKLANA INFINITY S63^{SV}

AMQ21S63

DOB: 28/12/2021

Registration Status: HBR

Mating Type: Natural

Genetic Status: AMFU,CAFU,DDFU,NHFU

TE MANIA UNLIMITED U3271 #
 TE MANIA INFINITY 04 379 AB #
 TE MANIA 95102 #
 Sire: AMQN23 BROOKLANA INFINITY N23^{PV}
 TE MANIA BERKLEY B1^{PV}
 BROOKLANA CHAMPAGNE H52^{PV}
 MEDLYN FLO-JO C46^{SV}

MEDLYN CHILE C25 #
 BROOKLANA STAR G57^{SV}
 MEDLYN STAR C26 #
 Dam: AMQL34 BROOKLANA STAR L34 #
 MEDLYN ETHAN E31^{SV}
 MEDLYN STAR G96 #
 MEDLYN STAR F23 #

Mid August 2023 TransTasman Angus Cattle Evaluation

TACE	CE Dir	CE Dtrs	GL	BW	200	400	600	MCW	Milk	SS	DC
EBV	-9.3	-5.3	-1.9	+7.7	+63	+109	+145	+163	+10	+2.1	-2.8
ACC	53%	44%	68%	70%	70%	68%	69%	66%	58%	64%	37%
Perc	98	97	88	98	7	9	7	1	93	48	90

TACE	CWT	EMA	Rib	Rump	RBY	IMF	NFI-F	Doc	Claw	Angle	Leg
EBV	+86	+4.1	-5.8	-7.8	+1.6	-0.2	-0.41	+17	+0.72	+1.08	+1.02
ACC	59%	57%	59%	60%	52%	62%	50%	31%	59%	59%	54%
Perc	7	76	99	99	4	97	3	64	24	75	45

Selection Indexes

\$A	\$A-L
\$120	\$265
97	91

Traits Observed: BWT, 400WT, 600WT(x2), SC, Scan(EMA, Rib, Rump, IMF), Genomics

Notes: Another AMQ N23 sired opportunity. Packed full of growth, inside top 10% for feed conversion, well above average for all growth EBVs, carcass weight, eye muscle area and retail beef yield. Breed to cows.

Purchaser: \$



BROOKLANA M HECTOR S17E

VIDEO LINK:



Lot 31 BROOKLANA M HECTOR S17E^{PV} AMQ21S17E

DOB: 16/12/2021 Registration Status: HBR Mating Type: ET Genetic Status: AMFU,CAFU,DDFU,NHFU

K C F BENNETT PERFORMER #
 COONAMBLE HECTOR H249^{SV}
 COONAMBLE E9^{PV}
 Sire: MANP417 MANDAYEN HECTOR P417^{DV}
 MANDAYEN BRENDA M401^{SV}
 MILLAH MURRAH EMPEROR H125^{SV}
 MILLAH MURRAH BRENDA J1^{SV}
 TE MANIA EMPEROR E343^{PV}
 BROOKLANA EMPEROR L29^{PV}
 BROOKLANA DREAM H24^{PV}
 Dam: AMQQ5 BROOKLANA MM PRUE Q5^{PV}
 COONAMBLE HECTOR H249^{SV}
 MILLAH MURRAH PRUE M4^{SV}
 MILLAH MURRAH PRUE F141^{PV}

Mid August 2023 TransTasman Angus Cattle Evaluation

TACE	CE Dir	CE Dtrs	GL	BW	200	400	600	MCW	Milk	SS	DC
EBV	-5.8	-2.6	-4.5	+7.0	+55	+100	+127	+114	+3	+1.6	-4.9
ACC	56%	45%	71%	75%	74%	72%	74%	69%	61%	73%	38%
Perc	94	91	54	95	26	23	29	27	99	68	43

TACE	CWT	EMA	Rib	Rump	RBY	IMF	NFI-F	Doc	Claw	Angle	Leg
EBV	+74	+3.1	+2.4	+3.5	-0.5	+1.8	-0.30	+30	+0.56	+0.68	+0.84
ACC	63%	61%	63%	63%	56%	66%	54%	50%	57%	57%	53%
Perc	26	85	8	5	93	58	6	14	6	4	5

Selection Indexes

\$A	\$A-L
\$183	\$320
68	68

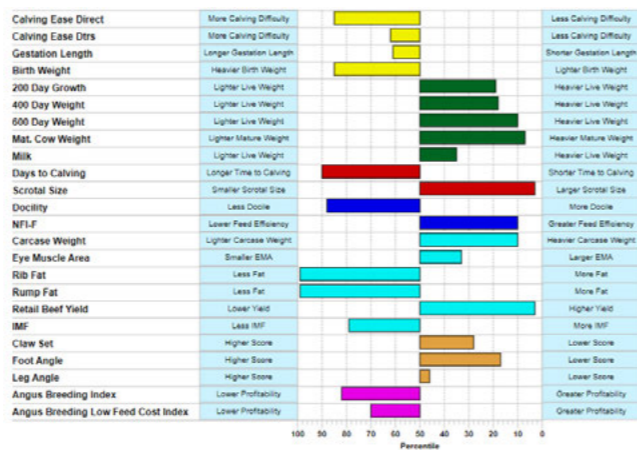
Notes: Millah Murrah Prue M4 grand dam, Coonamble Hector on sire and dams side of the pedigree, P417 was a limited use, outstanding sire, from a Millah Murrah Embryo. Dam, Q5, has produced our best heifer prospect yet, sired by a Millah Murrah Paratrooper son. This young sire opens up tremendous scope for breeding options.

Purchaser: \$



BROOKLANA CAPITALIST S24

VIDEO LINK:



Lot 32 BROOKLANA CAPITALIST S24^{PV} AMQ21S24

DOB: 27/09/2021 Registration Status: HBR Mating Type: Natural Genetic Status: AMFU,CAFU,DDFU,NHFU

CONNEALY CAPITALIST 028 #
 LD CAPITALIST 316^{PV}
 LD DIXIE ERICA 2053 #
 Sire: AMQQ25 BROOKLANA CAPITALIST Q25^{PV}
 ASCOT HALLMARK H147^{PV}
 MILLAH MURRAH FLOWER N91^{SV}
 MILLAH MURRAH FLOWER G56^{PV}
 TUWHARETOA REGENT D145^{PV}
 RENNYLEA J474^{SV}
 RENNYLEA C310 #
 HINGAIA 469 #
 Dam: AMQQ22 BROOKLANA MM ELLA Q22^{PV}
 MILLAH MURRAH ELA K7^{SV}
 MILLAH MURRAH ELA G88^{SV}

Mid August 2023 TransTasman Angus Cattle Evaluation

TACE	CE Dir	CE Dtrs	GL	BW	200	400	600	MCW	Milk	SS	DC
EBV	-2.5	+1.7	-4.1	+5.8	+57	+102	+141	+137	+18	+4.3	-2.8
ACC	55%	46%	68%	71%	70%	68%	72%	66%	60%	72%	38%
Perc	84	63	61	84	19	18	10	7	37	3	90

TACE	CWT	EMA	Rib	Rump	RBY	IMF	NFI-F	Doc	Claw	Angle	Leg
EBV	+84	+7.6	-4.8	-6.0	+1.6	+1.0	-0.21	+11	+0.74	+0.82	+1.04
ACC	59%	59%	60%	60%	54%	63%	51%	43%	61%	61%	59%
Perc	9	33	99	99	4	79	10	89	28	17	52

Selection Indexes

\$A	\$A-L
\$163	\$316
83	71

Notes: Millah Murrah genetic grandson, represented by Flower and Ela cow families, above average EBVs for growth, feed efficiency, carcass weight, retail beef yield. Entry point into Millah Murrah breeding, blended with Emperor Capitalist sire lines.

Purchaser: \$

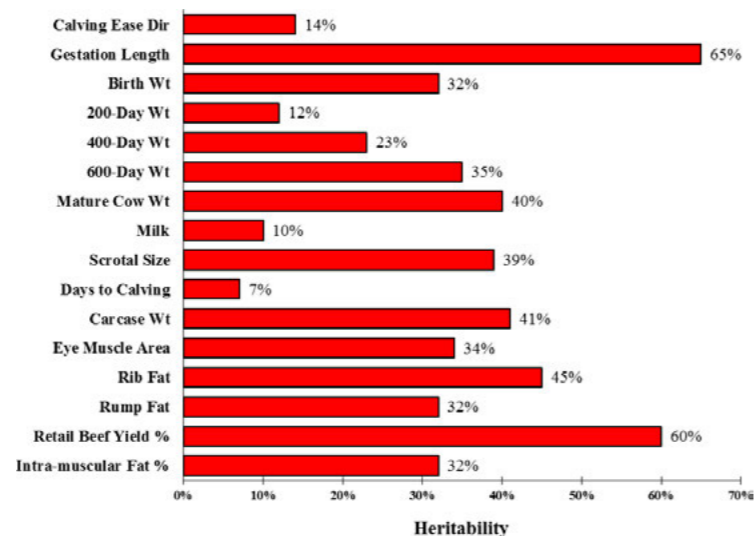
Heritabilities of Traits in Angus Group TACE (TransTasman Angus Cattle Evaluation)

Only part of the variation that we observe among animals is due to genetic differences. The majority of the variation is generally due to non-genetic factors such as differences in environment and nutrition.

The degree to which genetic differences influence performance varies from trait to trait. This is explained by differences in the "heritability" of the traits.

Growth and carcass traits tend to have moderate to high heritabilities (i.e. 20 to 60%), whilst maternal traits have low heritabilities (10% or lower).

Angus TACE takes into account the different degrees of heritability of various traits, and the known genetic relationships between the traits.



Brooklana Angus Bull Stud Guarantee

Any Brooklana Angus bull that proves to be structurally unsound, infertile or incapable of service is guaranteed for up to 2 years from the date of sale. The guarantee is contingent upon the purchasers managing the purchased bull(s) in accordance with the attached, Brooklana Angus Bull Management Plan.

Under these circumstances Brooklana Angus Stud will: REPLACE THE BULL WITH A SATISFACTORY SUBSTITUTE IF AVAILABLE, OR ISSUE A REFUND EQUAL TO THE VALUE REMAINING *see below, less the salvage value.

The guarantee covers the purchase value of the bull, without interest, cost and damages. The guarantee shall apply providing the bull's incapacity is not caused by injury or disease contracted since leaving Brooklana Stud, the value remaining is calculated on the basis that the guarantee is reduced by one half of the purchaser price for each year of service from the sale date. The purchaser on request must supply a Veterinary certificate. Any dispute that may arise shall be settled by a mutually agreed arbitrator and must be lodged within 12 calendar months from the date of sale.

DISCLAIMER: All possible care has been taken by the vendor to ensure that all information provided relative to this sale is correct at the date that the information was provided. Purchasers are encouraged to seek independent verification of the publication of any marketing material associated with this sale. The vendors and their agents do not accept any responsibility for any representation made or contained within marketing material applicable to this sale.

SUCCESS LEAVES CLUES

Improving our cows by using high quality bulls is a slow process.

Including gestation, from an animal being born until we can get a calf out of that animal, is around 2 years. If we take into consideration that the cow and bull each contribute half of the make-up of the calf, immediately the contribution of the bull is down to 50%. Next step is to look at the heritability of the traits, to understand the degree of change that we can expect. Wherever management has a big influence on the outcome, the heritability is understandably lower. Take for example gestation length versus birthweight, gestation length is 65%, birth weight 32%. No way can management affect gestation length, but it can affect birth weight.

It is a well-held view that debits and credits are interrelated, in that wherever you have a credit, you will find a debit, the same for traits, in my opinion. Pursuing an individual trait is often to the detriment of at least one other trait. The Angus breed has become the dominant breed worldwide, the dominant traits of the breed have been endorsed by beef farmers worldwide. These, in my opinion centre around the females. Adaptable, hardy, maternal, great carcasses, amazing feed converters.

There is a fine line between improvement of the breed and change of the breed. Concentrating on what the breed has become famous for and improving those traits is very different to changing the breed to become more dominant in traits that it is not known for, in my opinion.

**Let other breeds pursue their advantage,
the Angus breed is at the forefront - let us keep it there.**

Rodger Pryce

Sale Lot 888: All descriptions, photos & videos available through Auctions Plus website: www.auctionsplus.com.au

Rebate: A rebate of 3% is payable to all outside agents who introduce their clients in writing prior to sale day and/or accompany them, and settle within 7 days.

 AuctionsPlus

**REGISTER AND
BID ONLINE**

www.auctionsplus.com.au



**Enquiries: Principal
Rodger Pryce**

Brooklana Angus
0411 396 939

www.brooklanaangus.com.au



**Enquiries: Agent
Tim Bayliss**

Ray White Dorrigo
0439 009 414

raywhiteruraldorrigo.com.au

**Free Transport is offered for up to 500kms from the sale venue, to purchasers who attend the sale.
Transport conducted by vendor approved carriers.**